

Bob Lynch
1966 – 1968
Paul G. Blazer High School
Ashland, KY

Basketball

Scored 1277 points from 1966-1968

1966 – Fifth leading scorer as a sophomore. Helped lead team to 64th District and 16th Region Championships. Ashland was defeated in quarterfinals of State Tournament by Louisville Male

1967 – Averaged team leading 18 ppg. Lead Ashland to 64th District Championship. Defeated in 16th Region finals.

Honors: All-District, All-Region and 2nd Team All-State

1968 – Averaged team leading 18.6 ppg. Lead Ashland to 64th District Championship. Defeated in 16th Region finals.

Honors: All-District, All-Region and Honorable Mention All-State

Baseball

Total career pitching record of 27W – 2L.

Helped lead Ashland to three consecutive State Championships from 1966 – 1968.

1966 – 6-0 won-lost record including four-hitter in the State Championship game.

1967 – 10-2 won-lost record. Won two State Tournament games and was pitcher of record in the championship game although the win was awarded to a reliever. Only two defeats were both by a score of 1-0.

1968 – 11-0 won-lost record including two wins in the State Tournament including the championship game.

Track

Member of record setting regional champion 880 relay team in 1968.

October 31, 2005

Dawahares/KHSAA Hall of Fame
2280 Executive Drive
Lexington, KY 40505

To the selection committee:

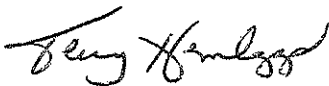
It is my honor and privilege to nominate Mr. Bob Lynch for selection to the Dawahares/KHSAA Hall of Fame. Bob was a standout basketball and baseball player at Ashland Paul G. Blazer High School from 1966 – 1968.

In basketball, Bob scored a total of 1277 points in his career. He was a quick, excellent shooting guard and was selected 2nd team All-State as a junior and honorable mention All-State as a senior. Bob's Ashland teams were regional champions in 1966 and runners up in 1967 and 1968. His hustle, ball handling and ability to make clutch shots made him invaluable to those Tomcat teams. He was awarded a scholarship to the University of Alabama as part of C.M. Newton's first recruiting class.

As good a basketball player as Bob was, he was an even better baseball player. Bob was instrumental in leading the Tomcats to three straight state baseball championships. His career record was 27 wins and 2 losses, with both losses by the score of 1-0. He was the winning pitcher in 5 state tournament games including the championship game in 1966 and 1968. He was selected to the All-State tournament team in 1967 and 1968. Bob was a true pitcher by any definition. Not only was the right hander a hard thrower, but he also was a master of changing speeds and location. His breaking ball was sharp, he had pinpoint control of all of his pitches, and he was calm and poised in even the toughest situations. Bob wanted the ball for all of the big games and delivered when he was called upon.

I have known Bob since I was a kid. My brother was a baseball teammate of Bob's from Little League through all of the high school championships. Growing up, I thought the Tomcats would always win when Bob pitched. I had every reason to think so. Bob was, and is, an even better person than he was an athlete. He and the other members of the Lynch family have been major contributors to the rich tradition of Ashland Tomcat athletics. Members of the Hall of Fame all had careers that had an impact on the community, region and the entire Commonwealth. Bob Lynch certainly fits this criteria. I encourage his selection into the Dawahares/KHSAA Hall of Fame.

Sincerely,



Terry Hemlepp
4245 Palmetto Drive
Lexington, KY 40513

October 25, 2005

Dawahares/KHSAA Hall of Fame
2280 Executive Drive
Lexington, KY 40505

To the selection committee:

Bobby Lynch played during the heyday of Ashland Tomcat sports during the grand and glorious 1960s. He excelled in baseball and basketball for the Tomcats and also was part of a fourth-place finishing 880-relay team at the 1968 State Track and Field Meet.

Lynch was a pitcher and key member of an Ashland baseball three-peat from 1966-68. That feat was duplicated for nearly 30 years and there have been only two teams in state history to win three baseball state titles in a row.

But as good as Lynch was in baseball, it was basketball where he was signed to a college scholarship. C.M. Newton, when he was the head coach at Alabama, took the high-scoring Tomcat guard. Lynch played at Alabama during a time of transition when the black athlete was just emerging in the Southeastern Conference.

Yet Lynch still was a star in his early days with the Crimson Tide. How much of a star? How about dropping 34 points on Kentucky in Memorial Coliseum on Jan. 26, 1970. Lynch was 14 of 26 from the field and 6 of 8 on free throws in that loss to the Dan Issel-led Wildcats that night.

Lynch also went up against Pete Maravich, one of the all-time greats. He held the LSU superstar to 69 points while scoring 24 himself in an Alabama victory.

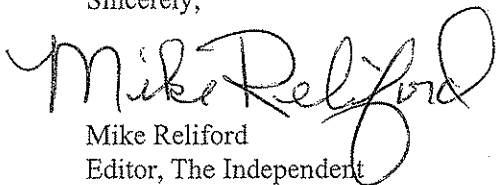
Lynch also played a year of baseball for the Crimson Tide. He even faced future NFL Hall of Fame punter Ray Guy.

In the annals of Ashland Tomcat sports history, the Lynch name stands synonymous with winning. His older brother, Billy, who played on the first Ashland state baseball champion in 1966 with Bobby, went on to be drafted by the Cleveland Indians.

Bobby Lynch later made his home in Ashland where he still lives today. He has coached youth league teams in Ashland and his sons were stars for the Tomcats, too.

Bobby Lynch would be a fine addition to the Dawahares-Kentucky High School Athletic Association Hall of Fame. I would highly recommend him for consideration.

Sincerely,



Mike Reliford
Editor, The Independent
(606) 326-2647

LEXINGTON
HERALD-LEADER

Timothy M. Kelly
President and Publisher

October 19, 2005

Dawahares/KHSAA Hall of Fame
2280 Executive Drive
Lexington, Ky. 40505

To the judges:

It can be very daunting for a journalist to read his own words for the first time in four decades after they were published.

Such was the case when I saw an old clipping from the Huntington (W.Va.) Herald-Dispatch, for which I was working in 1968. The column was about Bob Lynch and how he was the unifying element and the constant in Paul G. Blazer High School's incredible run of three straight state baseball championships in the mid-Sixties.

My first reaction was to cringe. Then I read the column and thought: yup, you may not have always gotten everything right, but in this case you did.

Thirty-seven years later, I stand firmly behind that column (although the writer's picture is a little scary).

I remember Bob Lynch and his brother, Billy, quite well. I played against Billy in basketball in high school. Fortunately, I did not have to bat against either one because my school was too small to have a baseball team.

Billy was the more flamboyant of the two. He was bigger than Bob and a left-handed power pitcher. Bob was a right-hander. He didn't throw quite as hard but was craftier. And his high school record speaks for itself. He was great in the clutch.

Beyond all that, he was at all times a young gentleman, mature beyond his years. I covered him in both baseball and basketball. I do not recall him ever being out of line. It doesn't mean he wasn't a fierce competitor, but he was calm, cool and collected.

I followed with interest his career at the University of Alabama, where Bob lettered in basketball three years and in baseball one year. Just attempting to play two sports at a major college is pretty impressive. But Bob led the Crimson Tide basketball team two years in a row in both assists and free throw percentage.

www.kentucky.com

100 Midland Avenue, Lexington, Kentucky 40508-1999
Office: (859) 231-3257 tkelly@herald-leader.com FAX: (859) 231-3454

I recall talking with C.M. Newton, the former University of Kentucky athletic director, who became coach of the Crimson Tide during Bob's college career. He remembers him fondly.

It is my pleasure to add my enthusiastic support to the nomination of Bob Lynch of the Ashland Paul G. Blazer Tomcats and the Alabama Crimson Tide for the Dawahares/KHSAA Hall of Fame.

Sincerely,

A handwritten signature in cursive script, appearing to read "Tim Kelly". The signature is written in dark ink and is positioned above the printed name.

Tim Kelly



SOUTHEASTERN CONFERENCE

MIKE SLIVE
COMMISSIONER

December 3, 2005

Selection Committee
Dawahares / KHSAA Hall of Fame
2280 Executive Drive
Lexington, Kentucky 40505

Dear Committee Members,

The purpose of this letter is to give strong support to the candidacy of Bobby Lynch for induction into the Hall of Fame. I had the opportunity to closely observe Bobby's high school career at Paul Blazer High School, Ashland, Kentucky in the late 1960's; then had the privilege of coaching Bobby in basketball at the University of Alabama in the early 1970's. Bobby had an outstanding career in both basketball and baseball at Alabama, and graduated with his class on schedule.

I first became aware of Bobby's athletic ability while coaching at Transylvania College in the 1960's, and upon becoming Head Basketball Coach at Alabama in 1968, I recruited Bobby in our first recruiting class. He played a critical role in the development of the Alabama program.

Bobby's high school career in basketball and baseball was marked by outstanding individual and team successes, and in itself, is justification for his induction into the Hall of Fame. In addition, his influence as a husband, father and Ashland citizen since his graduation is outstanding.

I have observed many individuals who have been honored with induction into the Hall of Fame - In my opinion, no one is more deserving of this honor than Bobby Lynch.

Sincerely,

C. M. Newton

Fairview, Boyd Co. In Opener

By MALCOLM CONLEY
Independent Sports Editor



IN TOURNEY ACTION—These three cagers will figure strongly in this week's 64th District Tournament action. Jim Day (top) is the area's leading scorer, having averaged 32.2 points a game for Fairview. Bob Lynch (center) has pumped them in at a 17.6 mean for Ashland. Tom Davis (bottom) is the top rebounder and number two scorer for Holy Family. Davis is averaging 12.9 points a game. Fairview and Boyd County meet tonight in the tournament opener.

This is the beginning of the end. Firing opens tonight on the Paul Blazer High School floor in the 64th District Tournament in the first of three weeks of action that will finish with a state champion being crowned at Louisville.

Boyd County and Fairview will kick off the tournament here when they do battle at 8 p. m. in a lower-bracket contest. The winner will advance into Friday's semi-final scrap with Ashland.

Holy Family and Catlettsburg drew first-round byes, and will play in the upper-bracket semi-finals Thursday. Finals are scheduled Saturday.

Leading the charges of Coach George Cooke into tonight's contest will be the area's leading scorer Jim Day, a 6-7 senior who is being contacted by multiple colleges and universities.

The Fairview ace has hit the cords for 902 points in 28 outings this season for a 32.2 point per game average. Included among Day's feats this year is a 60-point effort against Wurtland, which was the top individual performance in the state until Allen County's Jim McDaniel hit for 63.

Rounding out tonight's starting lineup for the Eagles, who have a 10-18 record, are: Roger Lemaster, 6-1 junior who is hitting the bucket at a 10.3 clip; Randy Hollingsworth, 5-10 sophomore with a 10.2 average; Jim Cunningham, 6-1 junior who possesses a 7.8 mean and Randy Virgin, 5-9 senior averaging just under five points per outing. Steve Whitt, 6-4 junior who owns an eight-point mark, could get the call.

Coach Mike Jupin's Boyd County quintet will be out in search of win number 13 this evening. The

Distinct
ing four points a tilt. Ken Darling is also ready for action and has averaged 5.3.

Thursday's contest in the 64th will feature two teams who have exceptional seasons. Catlettsburg, under the capable direction of Coach Jack Ison, unreeled a 10-game win streak and will be taking a 17-7 mark into the tournament.

Coach Bill Carroll has inspired his Holy Family aggregation to one of the school's finest marks. The Irish presently stand at 23-7 on the year.

Both Holy Family and Catlettsburg have four starters finding the bucket in double figure accuracy.

John Layne, 6-1 senior, leads the Irish with a 15.4 mark while Tom Davis, 6-4 junior, is at 12.9; Bucky Morris, 5-10 senior, 12.6 and 6-3 senior Maynard Thomas, at 12.1. Tom Borgerding, the other starter, has a 7.6 average.

Leading Catlettsburg is Roger Zornes with an 18.6 mean while Pat Lee, 6-5 senior, is hitting at 14.2; Mike Hawk, 5-10 junior, 12.5 and 5-11 junior Steve Spears, 11.4. Larry Price, 6-3 senior hitting at 5.1, is the other probable starter.

Likewise, Coach Harold Cole has four starters in twin-digit category for his defending regional champions. Bob Lynch, 5-11 junior guard, possesses a 17.6 mark to pace the Tomcats who are 20-4.

Danny Owens, 6-2 senior, is hitting at 14.4, while sharp passing Joe Conley, 5-10 junior, averages 13 points a tilt. John Sieweke, 6-3 senior, is at 12.8.

Ellis Childers, 6-1 senior, who usually gets the starting nod, is hitting for 7.7 an outing and Wayne Workman, 6-2 senior who sees plenty of action, has a 6.4 average.

Radcliffe, Roberts Pace Win

By MIKE RELIFORD
Assistant Sports Editor

The Russell Red Devils and Marvin Meredith, after four years as the 16th region's bridesmaid, downed the Ashland Tomcats, 79-72, last night in the Paul Blazer gym for the right to represent the region in the State Tournament in Louisville this week.

Russell had been to the tournament twice before Meredith took the helm.

"I was beginning to feel like we might never make it," Coach Meredith said. "It is like a dream come true. The boys really earned it!"

Russell, six times in the regional tournament and four times in the championship game under Meredith, won behind the shooting of Tom Roberts and Steve Radcliff. Roberts, a 6-8 junior, and Radcliff, a 6-2 senior, each ripped in 27 points while controlling the backboards for the Red Devils.

Irony again prevailed as the win on the Tomcat floor proved to be a retaliation for Ashland's 74-66 victory at Russell during the regular season, but it was the most inopportune time ever for Coach Harold Cole and the Ashland players and fans.

As always, when a dream comes true for one, another has to suffer. Ashland, ranked seventh in the final AP poll and bouncing up and down the ratings all season, closed out a tremendous season with the most disappointment being felt by the coaches and the players.

Entering the season with a team that was supposedly going to have to battle for a winning

Coach Meredith and the players, entering the State Tournament with a 23-5 record, worked hard and earned the right to advance. The glory must be placed where it belongs and that is to the Greenup County players and their coaches.

There was Tom Roberts who, besides his 27 points, crashed the boards for 13 big rebounds, blocked shots and hit three crucial rebound shots in the final quarter.

There was Steve Radcliff who, besides his 27 points, lugged in eight rebounds, hit Roberts with three basket-producing passes in the fourth quarter and sank a 20-footer with 3:33 left to give Russell a lead which it never relinquished.

There was Roger Vanover who pitched in 14 points and grabbed seven rebounds. Vanover broke loose in the final period for eight of his total score.

And there was Mike Fannin and Tookie Helton. Fannin ran the show with the skill of a veteran and finished with nine points. Helton only scored two, but was credited with five assists.

Ashland was led by junior guard Bobby Lynch with 21 points. Lynch consistently led Ashland back after time and again the Tomcats were almost counted out.

John Sieweke followed Lynch with 14 points while Danny Owens and Joe Conley netted 13 and 12, respectively. Ellis Childers and Wayne Workman finished with six points each while Childers displayed another fine defensive game.

Owens and Childers led Ashland's rebounding with eight each. Ashland outrebounded Russell for the game, 35-29. Russell connected on 29 of 74 shots from the field while the Tomcats pitched in 28 of 71, both averaging 39 per cent.

Ashland jumped to a quick 6-0 lead as Lynch hit a pair of foul shots and a bucket in the first minute of action and Sieweke laid in a 10-footer with 5:34 showing on the clock. Roberts netted the next four points and the stage was set for one of the most exciting regional championship games in several years.

A 15-footer by Lynch with five seconds left sent Ashland ahead 17-16 entering the second quarter.

Russell roared back in the second quarter to outscore Ashland 19-12 to take a 35-29 lead to the dressing room at halftime. Ashland outscored Russell 9-3 in the first 2:07 of the second half to tie the contest at 38-38. The teams traded buckets until Radcliff hit a basket and free throw

for a 45-42 Russell lead. The Tomcats couldn't catch up and the third period ended with the Red Devils on top 55-54.

After Vanover hit the opening shot of the fourth quarter, Sieweke hit a 15-footer and then took a pass from Lynch for a "gimme" to put the Tomcats on top 58-57 with 6:35 remaining. Roberts hit another "soft" left-hand jumper to put the Red Devils back on top, 59-58.

Ashland lost the ball on its trip down the floor, but Childers made a steal under the Russell basket and hit Workman with a pass to put the Tomcats back on top.

Fannin, Vanover and Roberts put buckets in consecutively but Lynch and Conley matched them. Radcliff then hit his shot and Russell was on its way to the State Tournament.

The game was marred by a scuffle between an Ashland fan and a referee immediately following the game.

Russell made a clean sweep of things last night as the Red Devil cheerleaders won the cheerleading trophy.

Players selected on the All-Regional Team were:

Bob Austin, McKell; Charles Baker, Grayson Prichard; Joe Conley, Ashland; Curt Cundiff, Rowan County; Ellis Childers, Ashland; Tom Davis, Ashland Holy Family; Mike Guiler, Bath County; Brent Henderson, Olive Hill; Bob Lynch, Ashland; Steve Radcliff, Russell; Tom Roberts, Russell; John Sieweke, Ashland; Workman 6, Childers 6, Sieweke 14, Lynch 21, Conley 12, Johnson, PF: 20, FT: 16-18.

Russell (79) — Radcliff 27, Vanover 14, Roberts 27, Fannin 9, Helton 2. PF: 12. FT: 21-27.
ASHLAND 17 12 25 18—72
RUSSELL 16 19 20 24—79

3/68 Page 17

Lynch Tops 'Cats With 26 Points

By MALCOLM CONLEY
Independent Sports Editor

Ashland reeled off 20 straight points to open the second quarter last night and went on to down a never-say-die Catlettsburg quintet 32-60 for the championship in the 64th District Tournament.

The surge at the start of the second quarter erased a closely contested initial stanza as the Tomcats of Coach Harold Cole went on to outpoint the Wildcats 32-9 in the frame and the outcome was decided.

Both Ashland and Catlettsburg will now advance into the 16th Regional Tournament at Morehead this week.

The guard combination of Bob Lynch and Joe Conley again paced the Ashland effort as 10 Tomcats hit the scoring column. Lynch displayed a fine floor game while also leading the Ashland rebounding and ripped the cords for 26 tallies. Conley moved the ball well and finished just behind Lynch with 24 markers.

Pivotman Mike Griffith was the only other member of the Ashland quintet in double figures as he found the range for 10 points.

High-point honors for the evening, however, went to Catlettsburg's versatile performer Roger Zornes. The 6-4 senior center sized the nets for 34 points as he sank 13 field goals and added eight of nine free throws.

Ashland hit 80 per cent of its shots in the game-splitting stint in the second stanza and finished the evening with 42 of 72 shots from the floor for a 58.3 mean. Catlettsburg had 73 shots but could hit only 21 for a cool 28.7 per cent.

The Tomcats also had a 51-38 edge in rebounding as they committed 21 miscues to 25 for the

Coach Wheeler's squad still had a four-point edge midway the initial period but Conley, Lynch and Griffith gave the Tomcats six straight points and a 15-11 lead. They were never headed from that point although being in front only 20-18 at the end of the quarter.

Getting some fine board work from Griffith and Roger Baldrige, Ashland exhibited a tight defense and alert ball handling in racing to its 20 straight markers in the second canto. Catlettsburg was unable to score until Spears sank a gratis heave with 2:59 left in the half. The Tomcats were in front 52-27 at intermission.

Conley and Lynch combined for eight straight Ashland points when the third period began and the Tomcats had a 26-17 bulge in the stanza to end 78-43 when the final eight minutes opened.

Reserves came into action in the last half of the third period for the Tomcats and finished the encounter. Catlettsburg outscored the host team 16-14 in the fourth.

Holy Family, Boyd County and Ashland each placed two players on the eight-player 64th District All-Tournament team.

Ashland Holy Family placed John Brislin and Tom Davis on the select squad while Jeff Jones and Burt Frasure represented Boyd County. Ashland players named to the team were Bob Lynch and Joe Conley.

Others making the team were Roger Zornes of Catlettsburg and Jim Cunningham of Fairview.

Holy Family won the sportsmanship trophy while the cheerleading award went to Catlettsburg.

Ashland (92) — Lynch 26, Conley 24, M. Griffith 10, Klaykamp 8, Baldrige, Mullins 6, Owens 4, Tackett, R. Griffith 4, Cooksey 2, Huff 2, Salyer 6. PF: 22. FT: 8-19.

Catlettsburg (60) — Johns T. Zornes 34, Ross 3, Recker 6, Spears 11, Adkins T, Laubach 4, Harper, Webb, Christy, Hunt. PF: 15. FT: 16-25.

ASHLAND	20	32	26	18-92
CATLETTSB'G	18	9	17	16-60

79 To 51 ³⁻¹⁰⁻⁶ Over Bath

By MALCOLM CONLEY
Independent Sports Editor

Ashland's Tomcats stand one step away from a return trip to the State Tournament, but . . .

Making that step will not be an easy one. Coach Harold Cole's five will be faced with the major task of gaining a win over either Russell or Olive Hill if they hope to repeat as the 16th Regional champion.

Ashland moved into Saturday night's 8 o'clock championship fray by turning back a battling Bath County quintet 79-51 last night in the Paul Blazer High School gym.

Russell, the state's 13th ranked team, clashes with the strong-finishing Olive Hill squad at 7:30 p. m. today in the lower-bracket semifinals with the victor moving into the title game against the Tomcats.

Once again it was balanced scoring that carried the Tomcats to their 14th straight win for a 23-4 record.

Bobby Lynch led the effort with a 19 point performance while John Sieweke was picking up 15, Joe Conley 13, Wayne Workman 11 and Danny Owens 10.

Coach Jack Smoot's young Bath County team managed to place only two players in double figures. Mike Guiler, 6-4 junior pivotman, labored diligently on the boards and came through with 17 tallies. Tommy Hogge, 6-0 junior, added 10 points for the Wildcats.

Rebounding was also dominated by the Tomcats as they had a 56-37 edge in hauling in caroms. Danny Owens and John Sieweke led this department for the Ashlanders, Owens grabbing 16 and Sieweke 15. Ellis Childers finished with eight, getting most of them in a fine first quarter effort.

Neither ball club shot extremely well. Ashland connected on 28 of 78 shots for a 35 per cent mark with Bath County netting

er from the foul line and again the Wildcats were in front. A three-point play by Lynch propelled the Ashlanders ahead 5-3 with 5:21 remaining in the first quarter and the Tomcats were never behind from that point.

Ashland tallied the next seven points for a 12-3 bulge and was ahead 18-10 when the quarter drew to a close. The fact that Bath County had trouble hitting, rebounding of Childers and sharp passing of Conley played important roles in the opening frame.

Childers gave Ashland a 10-point lead at the start of the evenly-played second quarter and the Tomcats had the same margin until the closing minute. Guiler sank a brace of gratis heaves and Hogge hit on a fast break to shave the advantage to six before Keith Johnson bucketed a foul shot for a 33-26 score at halftime.

Bath County's Bill Johnson narrowed the gap to five points when the third quarter opened but then Ashland moved into command. The Tomcats steadily pulled away, outpointing the Wildcats 24-11 in the stanza for a 57-37 lead at the horn.

After Bath County's Johnson and Ashland's Conley were ejected following a brief flare-up of tempers, with a minute having gone by in the fourth period the Tomcats unreeled 10 straight points to put the game out of reach. Ashland outscored the Wildcats 22-14 in the final eight minutes.

Bath County concluded its season with a 16-12 slate.

Ashland (79) — Owens 10, Workman 11, Childers 6, Sieweke 15, Lynch 19, Conley 13, Johnson 4, M. Griffith 1, Salyer, R. Griffith, Gartrell, Kleykamp.
PF: 22. FT: 23-35.

Bath County (51) — Clemons 4, Hogge 10, Harris 1, Guiler 17, Johnson 8, Caudill 7, Stull 2, Copher, Brewer, Goodpaster.
PF: 22. FT: 21-34.

ASHLAND 18 15 24 22—79
BATH CO. 10 16 11 14—51

3/9/68 Page 5

Tomcats Tangle With Russell For State Tournament Berth

By MALCOLM CONLEY,
Independent Sports Editor

MOREHEAD — The 16th Regional Tournament has run true to form Ashland and Russell, pre-tourney favorites, have moved in to tonight's 7:30 championship game.

Coach Harold Cole's Tomcats earned a berth in the finals by downing a stubborn Olive Hill quintet 72-50 in Friday night's lower-bracket semifinal contest. Tonight's encounter will mark the third straight year Ashland and Russell have clashed for the 16th Regional title and a trip to the state tournament Russell won last year with Ashland taking the crown the year before.

Last night's tilt, naturally, was a happy occasion for the Tomcats but it was also a somewhat sad time for basketball in this region. It marked the finale for Coach Jack Fultz after 17 seasons at the helm of the Olive Hill Comets.

And the smaller Olive Hill squad gave their coach an impressive send-off although they were unable to conquer the Tomcats. Playing deliberate basketball, the Comets led Ashland 22-18 at the end of the first quarter and stayed within striking distance until the fourth quarter.

Olive Hill closed out the campaign with a fine 26-6 record and makes Fultz' career mark 385 wins and 191 losses.

The victory sends Ashland into the title fray with a 22-9 slate. Russell will be putting a 24-5 mark on the line this evening.

Control of the backboards proved to be the primary difference as Ashland hauled down 44 rebounds

to 16 for the Comets. Roger Baldrige, who fouled out with 2:15 to play, and Ray Kleykamp paced the Tomcats in this department with 13 and 11, respectively.

Both ball clubs shot well during the game. Olive Hill, which hit a cold streak in the fourth stanza, finished the night with a 46.3 shooting percentage while Ashland made good on 50.9 percent of its shots from the floor.

Smooth operating Bob Lynch was the top scorer for the evening as the Tomcat guard pumped in 20 points. Baldrige finished with 15 markers to his credit while Kleykamp was hitting for 12 and Joe Conley, Lynch's running-mate at guard, came through with 11.

Olive Hill managed only two players in the twin-digit category. John Waggoner, who like Ashland's Baldrige and Mike Griffith ran into nearly foul trouble, hit the cords for 18 ballies to top the Comets' effort. John Brown also dropped through 13 points.

Brown sent Olive Hill into the initial lead with a free throw but Kleykamp and Lynch countered with charity throws to give Ashland the advantage. Brown, however, caged another free and Waggoner hit on a 15-footer and again the Comets were out in front.

Baldrige and Griffith efforts returned the Tomcats into the advantage, 7-6, but gratis heaves by Waggoner and Lee Dickson placed Olive Hill back in charge, 17-7 with 3:37 remaining in the opening period.

Play slow, deliberate basketball, Olive Hill retained the lead throughout the quarter, leading 22-18 at the horn.

Ashland scored eight of the first 10 points when the second quarter got underway as they took the lead 26-24 on a 10-footer by Lynch following a steal by John Mullins with 4:29 left in the half. The Tomcats were never headed from that point. They led 33-27 at intermission after having outscored the Comets 15-5 in the second period.

The third capto was also a low-scoring affair with Ashland outpointing the Carter County quintet 14-9 for a 47-36 bulge going into the final eight minutes.

Waggoner and James Duncan gave Olive Hill two quick buckets as the fourth quarter got underway, shaving the difference to seven but then Ashland took command.

With Kleykamp and Baldrige turning in sterling performances in the rebounding department, the two back-line cagers teamed with Lynch to give Ashland 13 of the next 15 points to put the game on ice.

Olive Hill, playing for the good shot, managed to get open on several occasions but the Comets' shooting had blown cold. Ashland had a 25-14 edge in the fourth period point-making.

Olive Hill (50) — Waggoner 18, Brown 13, Dickson 8, Duncan 8, Taylor, Gee 3, Sartaine, Johnston, Walker, Tackett, Bowling PF: 18. FT: 12-18.

Ashland (71) — Lynch 20, Conley 11, Griffith 7, Kleykamp 12, Baldrige 15, Mullins 9. PF: 14. FT: 18-24.

OLIVE HILL ... 22 5 9 14—50
ASHLAND ... 18 15 14 25—72

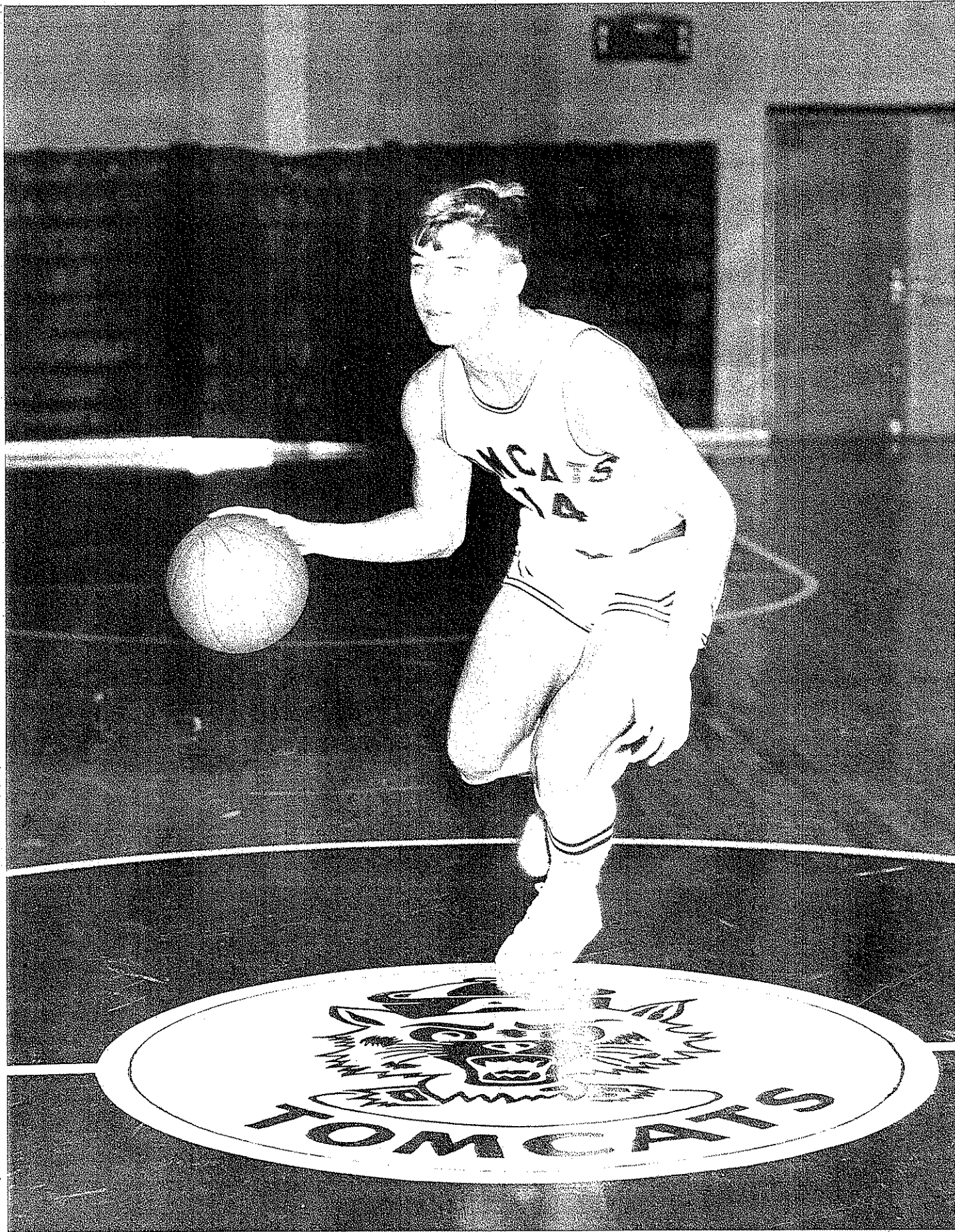
Russell Places 4 Players On All-Regional

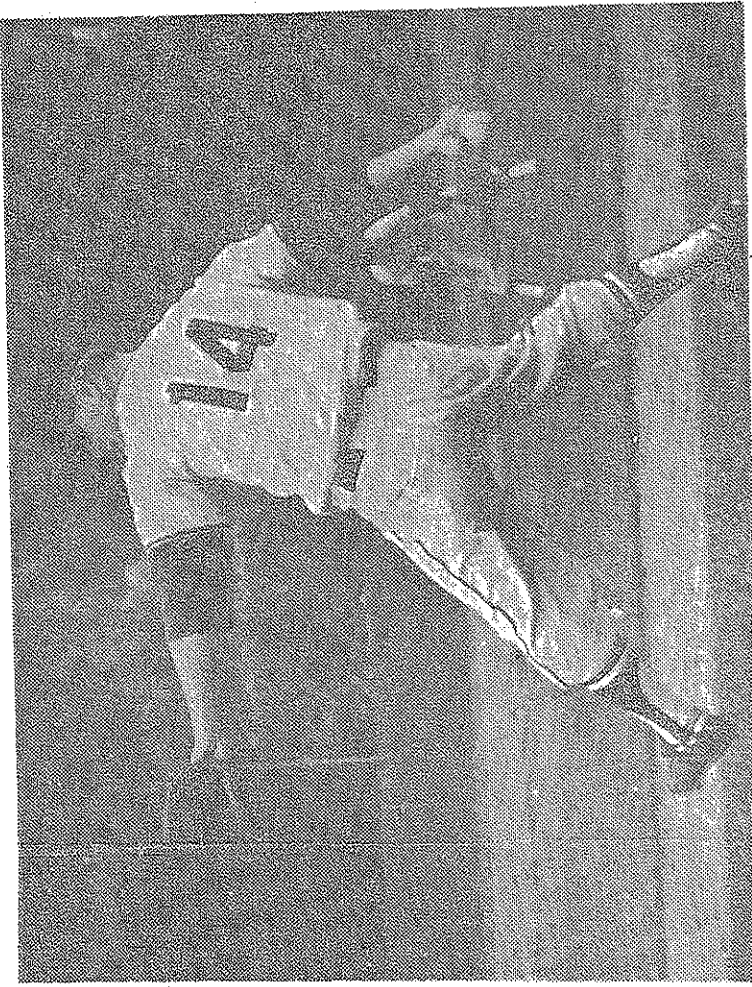
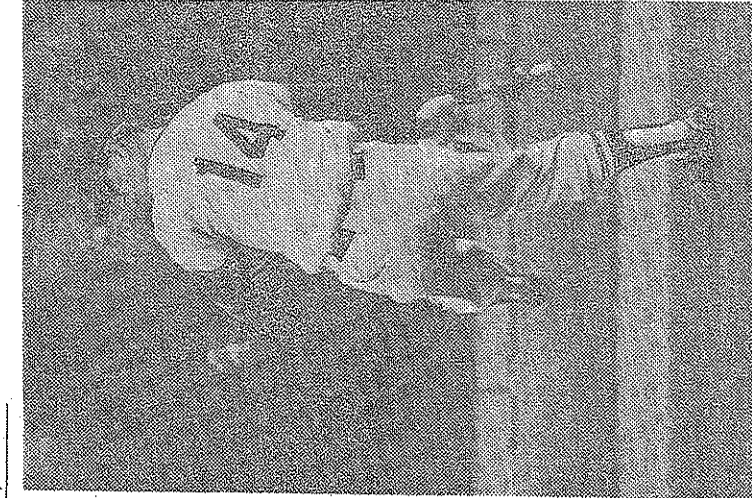
Russell placed four players on the all-tournament team while Ashland had three. The team included:

- Tom Roberts, Russell
- Bob Lynch, Ashland
- Joe Conley, Ashland
- P. D. Motley, Morgan County
- Roger Vanover, Russell
- Lanny Miller, Russell
- Everett Pennington, Grayson
- John Waggoner, Olive Hill
- Charles Helton, Russell
- Don Gullett, McKell
- Roger Zornes, Catlettsburg
- Mike Griffith, Ashland

Catlettsburg won the blue ribbon as first place representative in the Kentucky Association Pep Organization Sponsors Cheerleaders Competition and will represent the region in state competition. Ashland won the second place ribbon and also a trophy given by the Morehead Mystic Club.

* * *





End Of One Era At Ashland... Start Of Another?

By JOHN MCGILL, JR.

An era is over . . . or is it? True, the outstanding pitching that Ashland High School has enjoyed from a pair of brothers named Lynch has seen its day, but the Tomcats may still be around when the State High School Baseball Tournament is played next spring. Ashland, if you haven't heard by now, has won the state title — and there's been a Lynch behind it all each time.

ITEM: It is 1966, and Ashland is trying for the 10th time to win the title after reaching the state tournament. The Tomcats have a brother pitching combination. There is Bobby Lynch, young righthanded, short, and tough. There is Billy Lynch, older, longer, lankier, outstanding.

ITEM: It is the past week. Bobby Lynch is a different fellow out there. He's bigger, much bigger than the sophomore of two seasons ago, and he wears glasses now.

But Bobby is still the same satisfied with his performance. And Friday, it was Bobby who came on in the sixth inning when a runner reached second base off Tim Huff, who had allowed only two hits to Louisville Southern.

Lynch pitched four and one-third innings as the game, scoreless, stretched wearily into the 10th inning. He did not give up a hit. It was a bit puzzling for while to watch him in the dug-out when his concern seemed most nonchalant. When Leonard Blanton motioned him to warm up early in the game, he made a deep sigh and said: "Well, fellas, here I go."

And when Joe Conley made a good catch of a hard hit ball

deep to left in the 10th, amid happy backslapping and congratulations by others to Bobby, who threw a two-hitter in the opener, returns . . . Hagg, who threw so finely yesterday, is just a junior . . . and more Lynchs are on the way.

One brother is just about the high school grades and another is supposed to be quite a whiz in the Little Leagues. Last year, one writer with an eye on the future penned these words: "Pass the rope, please. One more 'Lynching' may be coming up."

Next season, Ashland may win again without a Lynch. And after that, it may be lostlynching time once more.

But it was Bobby who let out a deep yell of happiness when the game was won. Those were sincere embraces he gave to his happy teammates. In that inning, when Ashland loaded the bases with none out, he looked out at Southern pitcher Mike Riffe pointed to the scene and said seriously: "Hey, I like to be in close places, but not THAT."

Is the era over? A few more items: Ashland loses only three starters (it lostlynching time once more.

deep to left in the 10th, amid happy backslapping and congratulations by others to Bobby, who threw a two-hitter in the opener, returns . . . Hagg, who threw so finely yesterday, is just a junior . . . and more Lynchs are on the way.

One brother is just about the high school grades and another is supposed to be quite a whiz in the Little Leagues. Last year, one writer with an eye on the future penned these words: "Pass the rope, please. One more 'Lynching' may be coming up."

Next season, Ashland may win again without a Lynch. And after that, it may be lostlynching time once more.

spring.
Ashland, if you haven't heard by now, has won the state title — and there's been a Lynch behind it all each time.

ITEM: It is 1966, and Ashland is trying for the 10th time to win the title after reaching the state tournament. The Tomcats have a brother pitcher by Lynch: young, righthanded, short, and tough. There is Billy Lynch: older, longer, lankier, outstanding.

Between them, they win all three games for Ashland and the Tomcats are champions.

That was the season when the semifinals were played in the morning and the championship in the afternoon. Billy, who now is pitching for the Cleveland Indians' system in the minor leagues, won the semifinal game by throwing five hitless innings in relief 3-2 — including 11 strikeouts, the last eight of which were successive.

Then, Bobby allowed only four hits to Shelby County and struck out seven while walking none in the title game. For a sophomore aged 15, the feat was impressive. He finished the season 5-0 and Ashland had a perfect 25-0 record.

ITEM: It is 1967, and only Bobby remains. He pitches three and one-third innings before leaving in an easy 7-2 win over Somerset in the opening game.

In the semifinals, he stymies Newport Catholic with a three-hitter and Ashland wins 2-0.

In the finals, he relieves early, pitches a hitless ball and strikes out two for one and one-third innings. Ashland jumps to a 4-1 lead. Lynch is taken out, and the Tomcats coast to an easy win.



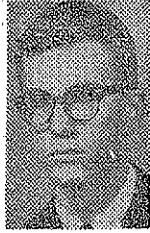
How To Lynch A Win

This is the way Ashland Bob Lynch wins baseball games. And so far it's been highly successful, especially this past year when the senior righthander posted an 11-0 record while leading Ashland to the state championship. From left here Lynch gets his signal and follows through with his delivery. (Staff Photos by E. Martin Jessee.)

State Batting Records

Teams	Gms.	AB	R.	H	RBI	Avg.
Owensboro	1	24	2	6	2	.250
Ashland	3	87	9	17	6	.195
Mayfield	2	43	4	7	3	.163
Greensburg	1	25	0	3	0	.120
Southern	3	74	3	8	3	.108
Newport Catholic	2	47	3	5	3	.107
Russell County	1	23	1	2	0	.088
Madison Central	1	21	0	1	0	.048

Kentucky Kibitzer



Three State Champs:
Lynch The Unifier . . . Tim Kelly

1966. 1967. 1968.

Three straight state baseball championships — a record. The sophomore, junior and senior years of Bobby Lynch at Ashland Paul Blazer High School.

They coincide.

In fact, Bobby Lynch is the one unifying element in the three state championship years.

Obviously, everything else is different.

In 1966, the Tomcats had two coaches — Zeke Myers and Maj. Joe Eckert. In 1967, Myers was the lone coach. And, this year, Leonard Blanton was the coach.



The 1966 team simply clubbed you into submission. It started with senior pitcher Billy Lynch (Bob's older brother). Opposing hurlers had it double-bad. The hitters only had to bat against Billy. The hurlers had to both bat against and pitch to him. And, then, there was catcher John Thomas, whose "tag" at home plate on Shelby County's Mike Casey (now of UK) in the final game has to rank with the Titanic meeting the iceberg — Casey sank. There was also shortstop Billy Workman (already a two-year regular at UK) and Tony Wright.

The returning regulars made an interesting 1967 team. It was a fine blend of excellent fielding, excellent outfield speed, good power and good pitching — just an all-

FRIDAY'S VICTORY RIDE

around good ball club.

Things didn't look too great for '68, though. Three all-state infielders (Wayne Workman, Mike Smith and Don Lentz) had graduated as had those outfield speed merchants (Tobey Tolbert and Steve Gerrard). But, Ashland did have back the outstanding tandem of pitcher Bobby Lynch and catcher Steve Hemlepp. And, around that Blanton built his team.

Bobby had a 6-0 won-lost record his sophomore year ('66), including a four-hitter against Shelby County in the tournament's championship game.

He went 10-2 as a junior, losing 1-0 contests to Lexington Henry Clay and Greenup. But, in the state tournament, he was nearly invincible. He pitched in all three games, got credit for two victories and was pitcher of record in the third game (the finals) although the win was awarded to reliever John Sieweke.

Again this year, the 6-0, 170-pounder was super-tough in the State tournament, pitching a two-hitter against Newport Catholic in Thursday's semifinals and coming back with four and one-third innings of hitless relief work in Friday's 1-0, ten-inning title game against Louisville Southern. That gave

Again this year, the 6-0, 170-pounder was super-tough in the State tournament, pitching a two-hitter against Newport Catholic in Thursday's semifinals and coming back with four and one-third innings of hitless relief work in Friday's 1-0, ten-inning title game against Louisville Southern. That gave him a 5-0 record for three years of state tournament competition as well as being his 10th and 11th wins of an unbeaten season.

Here's his state tournament record:

	IP	H	R	ER	BB	SO
Shelby Co., 1966	7	4	1	0	0	7
Somerset, 1967	3 1-3	2	0	0	0	6
Newport Cath., 1967	7	3	0	0	1	9
Ft. Knox, 1967	1 1-3	0	0	0	1	3
Newport Cath., 1968	7	2	1	0	2	10
Lou. Southern, 1968	4 1-3	0	0	0	0	7
Totals	30	11	2	0	4	42

And, now, it's time to reflect. And look ahead.

On pitching the championship game as a sophomore: "I wasn't shook much at all, really. I didn't have time. Ten minutes before the game started, the coach told me I was going to pitch . . . They had Bill warm up twice (he had pitched the first two games) but I told him he could sit down because I had everything under control."

On following Bill (now a Cleveland Indian farmhand in Rock Hill, S. C.): "We have really competed all our life since we started playing baseball. He leads the way and I try to follow."

On the state tournament: "You pitch better in the State — there's more incentive down there. I didn't pitch better this year, but I did last year. My arm seemed more tired last year, but this year it was just the idea of winning three in a row. I just kind of wanted to win the last game."

Conley, Hemlepp Helpful

On the two other senior regulars this year, Joe Conley and Hemlepp (both of whom made all-state with Lynch and Tim Huff): "Joe was a big help. He really was even more serious in baseball than he was in basketball. And Hempy has always helped me. He's probably the best catcher in this area. He knows what I'm going to throw, so I don't have to shake him off."

On this summer: "I'm not going to play Legion ball. I'm working downtown at Curtain Walls where they make marble slabs. It's good for my arms, lifting heavy bags."

On college: "I want to play both baseball and basketball (he was a three-year standout in that, too) until I find out I can't do both. Right now, it's narrowed down to Marshall and Alabama. I go down to Alabama Monday, come back Wednesday and then I'll make a decision."

On a possible No. 4 for next year's Tomcats: "If they can get somebody to lead them and to keep them serious sometimes — but you're not going to be able to keep those guys serious all the time — and make them buckle down and realize what they can accomplish, they can do it. They've got the talent."

They'll have the talent, it's true. But they won't have Bobby Lynch. Ones like him don't come along very often.

SPORTS

SATURDAY EVENING, MAY 11, 1968

PAGE FIVE

Lynch Hurls No-Hitter As AHS Wins District Title

The game lasted only five innings but during that time Ashland's Bob Lynch turned in a nifty no-hitter while fanning 11 and the Tomcats erupted for 12 safeties of their own.

As a result, Coach Leonard Blanton's squad turned back Louisa 13-0 to capture the district baseball championship at Central Park and earned the right to play in the regional tournament at Morehead May 24 and

Ernie Stone, Louisa center fielder, was the only player to reach base against Ashland, the defending state champions. He was safe on an error after leading off in the third, went second on a stolen base and to third on another Tomcat miscue. Lynch then proceeded to strike out the next three batters to prevent Stone from scoring.

The victory was the seventh

straight this season for the talented Ashland moundsmen, running the Tomcats' mark to 16-3 for the year.

Ashland, meanwhile, jumped on Louisa starter Harold Crabtree for eight hits to ignite a four run first inning and a nine-run effort in the second for victory. Dough Hutchinson took over for Crabtree in the second and finished the contest, called at the end of 4½ innings because of the eight-run advantage rule.

Catcher Steve Hemlepp led Ashland's hitting parade with three trips while Lynch, Tim Huff, and Dave Cox were each contributing two safeties.

Hemlepp had three singles while all of Lynch's safeties were singles but they drove in three runs.

Huff belted a two-run homer into the street in the second frame to go along with his first inning single.

Cox bounced one over the fence in rightfield for a double and also rapped a single, both coming in the second inning, driving in three runs.

The other Ashland safeties, all singles, came off the bats of John Mullins, Fred Leibee and Mike Tackett.

LOUISA	AB	R	H	RBI
York, 2b	2	0	0	0
Murry, ss	2	0	0	0
Cooksey, 3b	2	0	0	0
Hewlett, c	2	0	0	0
Musick, rf	1	0	0	0
Humble, 1b	1	0	0	0
Stone, cf	2	0	0	0
Samonds, lf	1	0	0	0
Crabtree, p	0	0	0	0
aHutchinson	1	0	0	0
bAdkins	1	0	0	0
cWhite	1	0	0	0
TOTALS	16	0	0	0

ASHLAND	AB	R	H	RBI
Cox, rf	4	2	2	3
Huff, 1b	3	2	2	2
Ison, ss	4	1	0	0
Hemlepp, c	3	2	3	1
Mullins, lf	3	2	1	0
Lynch, p	3	1	2	3
Staten, 2b	1	0	0	1
Leibee, 3b	3	1	1	1
Tackett, cf	1	2	1	0
TOTALS	25	13	12	11

aRelieved Crabtree in 2nd
bStruck out for Musick in 5th
cStruck out for Humble in 5th

LOUISA 000 00- 0 0 3
ASHLAND 490 0x-13 12 2

E-Murry, Cooksey, Humble;
Ison, Lynch. LOB-Louisa 1;
Lynch, Ison. 2B-Cox. HR-
Huff. SB-Cox (2), Leibee,
Tackett (2). SF-Staten.

IP H R ER BB SO
Crabt (L) 1 1/3 8 9 7 0 0
Hutch' son 2 2/3 4 4 3 4 0
Lynch (W) .. 5 0 0 0 0 11
PB-Hewlett (2) U-Griffith,
Colvin.

Senior Year
1968
Baseball

SPORTS

PAGE ELEVEN

FRIDAY EVENING, MAY 17, 1968

Lynch Records Perfect Game

By MALCOLM CONLEY
Independent Sports Editor

A no-hitter is the dream of every pitcher and a perfect game is looked upon as the ultimate goal. Bob Lynch achieved that pinnacle of success yesterday afternoon in Central Park as he hurled the Ashland Tomcats to a 10-0 decision over Ceredo-Kenova.

Lynch recorded 12 strikeouts in retiring the 18 batters he faced, the game being called in the bottom of the sixth because of a 10-run advantage

Mixing his deliveries well, the Ashland mound ace used 69 pitches during the contest. It was the eighth straight victory of the season for Lynch giving Ashland a 17-3 record.

Ceredo-Kenova was never able to hit the ball out of the infield against the hurling of Lynch. Of the six balls hit by the Wonders, one batter popped

up to the second baseman, one to the first baseman and one to the shortstop. Two batters ground out short to first and on

the other, Lynch had the assist. Glen Adkins of Ceredo-Kenova also turned in a fine mound effort to keep Ashland in check through the first four innings although the Tomcats did manage to pick up an unearned run in the third when Fred Leibe walked, stole second, advanced to third on Dave Cox's sacrifice and scored on a C-K error.

Adkins, however, began to tire in the fifth and Ashland hitters started to find the range. Lynch opened the inning with

a single, moved to third on a wild pitch and a passed ball, then crossed the plate on an error. Cox singled sharply down the left field line and Bobby Ison was safe on another C-K miscue. Catcher Steve Hemlepp followed Ison to the plate and promptly rapped a single to left, plating both Cox and Ison for a 4-0 Ashland advantage.

But the inning was still not over for the regional-bound Tomcats. John Mullins found a high pitch to his liking and blasted it into the street in left for a home run, sending Hemlepp home ahead of him. Adkins then got the next two batters to halt the uprising.

The Tomcats continued their bombardment in the sixth frame getting five consecutive hits after Adkins had fanned the first man he faced in the inning.

Cox singled to right center, Tim Huff doubled to right, before Ison, Hemlepp and Mullins each belted singles between third and short for four more Ashland tallies to end the ball game.

Mullins, with his two-run homer, and Huff, with a double, were the only extra-base hitters of the afternoon. They each added a single as Mullins accounted for three runs batted in.

Hemlepp also had three RBI with a pair of timely singles while Cox and Ison contributed two one-beggars to the Ashland attack. Lynch's single was the other safety as the Tomcats rapped 11 hits.

Ashland has a doubleheader scheduled at Central Park with Hazard at 2 p.m. Saturday, provided the Bulldogs win in their district tournament today.

Ceredo-Kenova 000 000-0 0-6
Ashland 001 054-10 11-0
Adkins, Rollins (6) and Fetters, Young (6); Lynch and Hemlepp; W-Lynch. L-Adkins; HR-Mullins; 2B-Huff.

SPORTS

ASHLAND (KY.) DAILY INDEPENDENT, THURSDAY EVENING, MAY 30, 1968

PAGE THIRTEEN

Ashland, Rowan County Gain Regional Finals

Championship Contest Rescheduled Today; Lynch Has 3-Hitter

By MALCOLM CONLEY
Independent Sports Editor

MOREHEAD — Ashland downed McDowell 3-0 and Rowan County edged Montgomery County 2-1 in the semifinals of the KHSAA Regional Baseball Tournament here yesterday but the weather man temporarily won the championship encounter.

Heavy rain and lightning arrived just before Rowan County and Ashland were scheduled to take the field for the title fracas and after a delay of an hour and a half, the tilt was rescheduled for 4 p.m. today.

The Tomcats' victory came as a result of a nifty three-hitter by Bobby Lynch as the Ashland mound ace recorded 14 strikeouts while waling only two batters.

Each team had five hits in the first game of the day but Rowan County showed across tallies in the fourth and fifth frames for the come-from-behind decision over Montgomery County.

An infield single by McDowell's centerfielder Jerry Moore in the first inning was the only safety the Big Sandy nine could manage off Lynch until the seventh when Tom Martin opened the frame with a single and was followed by a double to left off the bat of Sam Meade. Lynch then proceeded to strike out the next three batters to insure the victory.

Ashland, on the other hand, rapped eight hits off the hurling of McDowell's Tom Martin to score into tallies in the first, fourth and sixth innings.

Tim Huff put Ashland on the scoreboard first when he blasted a triple into left field in the opening inning and came home as Bob Ison grounded out to the first baseman.

Ison scored the second run of the day for the defending state champions. He opened the fourth canto with a single up the middle and was sacrificed to second by Steve Hemlepp. A wild pitch gave him possession of third and he came home on John Mullins' sacrifice fly to right.

The Tomcat shortstop also accounted for the final run, opening the sixth with a two-bagger. He advanced on Mullins' fly to center and scored on a single by Joe Conley.

Ison with a double and single and Conley with two one-baggers led the Tomcat hitting effort with Huff's triple being the only other extra-base knock for the winners. Dave Cox, David Staten and Lynch rounded out the Ashland stick work.

Martin, in being dealt the setback, did a nice job for the McDowell nine keeping the Tomcats in check most of the way although he was not overpowering. His teammates gave him plenty of support as he fanned three and did not issue

a pass.

Yesterday's first tilt was typical of the mound efforts displayed throughout the tournament. Robert Wiggenton, smooth-throwing lefthander, displayed fine form in being dealt the loss while sophomore Mike Abner was impressive in picking up the win for Rowan County.

Montgomery pulled to an advantage with a run in the second inning. Secoud sacker Eddie Davis led off with a single to left and was sacrificed to second by Labon Richardson. Larry Donithan then plated Davis with a looper down the right field line.

The well-drilled Rowan County aggregation was not to be outdone, however. They picked up an unearned marker in the fourth to knot the count when Ronnie Skaggs was safe on a fielder's choice, advanced on an attempted putout of Larry Kegley, went to third on a passed ball and scored on an error.

An error on a ball hit by Donnie Greenhill and singles by eighth-grader Billy Fouch and James Cassidy gave Rowan the deciding run in the fifth.

Jim Rogers had two singles to set the pace for the losing Montgomery County nine. Davis, Donithan and Gary Willoughby added the other singles.

James Cassidy set the pace for Rowan County with a duo of one-baggers while Fouch, Greenhill and Steve Ramey contributed singles.

Abner recorded four strikeouts and walked one in getting the victory while Wiggenton fanned five and gave up two charity trips to first in being dealt the setback.

Ashland will be taking a 19-3 record into today's championship game while Rowan County is now 17-5.

Tim Huff probably will get the mound call for the Tomcats while Steve Bumgardner is slated to start for Rowan County. Both are juniors.

MONT. CO. 010 000 0-1 3 4
ROWAN CO. 000 110 x-2 3 1

Wiggenton and Rogers; Abner and Cassidy.

McDOWELL 000 000 0-0 3 4
ASHLAND 100 101 x-3 3 1

Martin and Patton; Lynch and Hemlepp; 2B: Huff; 2B: Meade; Ison.

SPORTS

WEDNESDAY EVENING, APRIL 17, 1968

PAGE SEVENTEEN

--Area Prep Baseball Roundup

Lynch Fans 11, Ashland Wins

Bob Lynch allowed Barboursville, two singles for a run in the first inning yesterday afternoon in the West Virginia city then faced only 20 batters the rest of the way as Ashland took an 11-1 decision.

The talented hurler recorded 11 strikeouts and walked only two in pitching Ashland to its third straight victory after a season-opening loss to Holy Family.

Dave Eller singled to open the bottom of the first for Barboursville and he advanced as Larry Lewis ground out, Eddie Braley walked and Mike Kirsch drove Eller home with the Pirates' only run on a single to rightfield.

Lynch then retired nine straight Barboursville batters before Don Blower walked to open the fifth. A double play, however, erased Blower and Darrell Black. Cliff James ground out to end the inning.

Eller was safe on an error to start the sixth for Barboursville but again a double play aided the Tomcat cause. Eller was caught off first after Bob Ison speared a drive to eliminate Larry Lewis. Justin Ray then doubled but was cut down at third base.

Lynch struck out the side in the seventh inning as he had done in the second and third frames.

Meanwhile, Ashland's bats were booming. The Tomcats rapped 18 hits with Bob Ison setting the pace in this category. The sure-glover shortstop blasted a triple and three singles in five trips as he drove in four runs and scored one himself.

Steve Hemlepp knocked in two runs with three singles while Dave Cox was getting a double and single. Joe Conley also rapped two one-baggers and Lynch was helping his own cause with a pair of singles.

Ashland scored four runs in the second inning, two in the third, one in the fourth and fifth and three more in the sixth.

The Tomcats will have a return game with Barboursville Thursday in a 4 p. m. tilt at Central Park.

ASHLAND . . . 042 113 0—11 18 7
BARVILLE. 100 000 0—1 3 5

Lynch and Hemlepp; Hansley, Sloan (4) and Black. 3B—Ison; 2B—Cox, Ray.

April 28, 1968

Lynch, Mullins Hurl Ashland

To Sweep;

Bob Lynch and John Mullins each turned in nifty two-hitters yesterday afternoon at Central Park in hurling the Ashland Tomcats to a doubleheader sweep over Madison Central of Richmond.

Lynch went the distance in the first game as he recorded 12 strikeouts and walked only one to give Coach Leonard Blanton's Tomcats a 4-1 decision. Lynch whiffed the third strike past 11 of the last 12 batters he faced.

Mullins, only a sophomore, came back with his two-bitter in the nightcap for a 9-1 Ashland victory. Mullins fanned 11 and issued three bases on balls.

Ashland, meanwhile, facing some fine hurling by the Madison pitchers, rapped seven hits in each ball game.

Lynch gave up a single to right field to leadoff batter Eddie Benton in the initial contest but proceeded to retire the next three batters.

Doug Cornette, leading off the second inning, singled to left. He moved to second on a sacrifice by Jim House and to third on a passed ball. An error permitted him to cross the plate for the only run by the visitors.

Ashland shoved across its first run in the opening frame when David Cox blasted a triple into center and scored on a single by Bobby Ison.

The Tomcats added two more runs in the fourth on a single by Joe Conley, followed by Mike Tackett's hard-hit triple to left which plated Conley. Tackett then scampered across the plate on a Madison miscue.

Ashland's final run came in the sixth on a double by Ison and a single by Steve Hemlepp. Conley was also safe on a single but Billy Wells retired the next three Ashland batters.

Ison, with his double and single, and the two singles by Conley topped the Tomcat hitting. Cox and Tackett's triples accounted for the other Ashland extra-base knocks while Hemlepp's single rounded out the plate work.

A walk to Eddie Benton with two out in the third, followed by a wild pitch and an Ashland error gave Madison its only run, unearned of course, off the hurling of Mullins in the second game.

Mullins was in charge of the

contest from the start and the only time he was in trouble was when the Richmond-based nine scored its run. He chalked up at least one strikeout in every inning.

Tom Mouyeos held Ashland in check through the first four innings but the Tomcats took advantage of five walks, two errors and three hits to explode for eight runs in the fifth. Ison and Fred Leibee doubled and Mullins singled for the hits in the frame.

The other Tomcat tally came in the top of the seventh, as Madison Central was the home team in the nightcap. Greg Dowdy led off with a walk, advanced on an infield putout and scored on a single by Mullins.

Ison duplicated his first game feat of a double and single while Leibee also had a two-bagger and single. Mullins aided his own cause with two one-baggers as the other Ashland safety was a single by Tim Huff.

Ashland now has won nine straight.

SPORTS

FRIDAY EVENING, MAY 3, 1968

PAGE NINE

Lynch Fans 17, Ashland Tops Ironton 10-2; Greenup Wins

Bob Lynch recorded 17 strikeouts yesterday afternoon at Central Park in hurling the Ashland Tomcats to their 12th straight victory.

The crafty moundman retired the first 12 batters, 10 by strikeouts, as only six Ironton batters reached base. Giving up only three hits, Lynch walked two and the other Tiger to get on made it through an error.

Ironton picked up its three runs in the sixth when Lloyd Kavanaugh led off with a double. Gary Massie was safe on an error and Phil Murnahan walked to load the bases. Greg Roush then cleared the sacks with a single to right center.

Ashland, meanwhile, took the lead with a run in the first when John Mullins led off with a single and was followed by Fred Leibee's double. Leibee was thrown out at the plate but Steve Hemlepp was safe on a fielder's choice and scored on Joe Conley's single.

Second baseman David Staten padded the advantage when he rapped a home run into the street in left field with one out in the fourth frame.

Hits by Mullins, Leibee, Bobby

Ison, Tim Huff, Cowley, Staten and Lynch produced seven more tallies for the Tomcats in the seventh.

Mullins, with three singles, led Ashland's 13-hit attack off the hurling of Massie and Bill Washburn. Three other Tomcat players had two hits.

Staten added a single to go with his home run while Leibee was adding two doubles and Lynch a duo of one-baggers. The Tomcats will be putting a

12-1 slate on the line at 4:30 p.m. today at Central Park when they face Huntington High and will meet Ashland Holy Family at 11 a. m. Saturday. The Irish has the only win over the Tomcats this season.

IRONTON	000	000	0	3	3	2
ASHLAND	200	170	x	10	13	1
	Massie, Washburn (6) and Harvey, Lynch and Hemlepp.					
	HR—Staten, 2B—Leibee (2)					
	Kavanaugh					

may 7, 1968.

Ashland, Louisa Advance In District Baseball Meet; Russell, Raceland Win

By MALCOLM CONLEY
Independent Sports Editor

Ashland, state baseball champion for the past two years, took the first step toward defense of that crown yesterday afternoon while the Bulldogs of Louisa were eliminating Ashland Holy Family from contention.

The action occurred in the district tournament at Central Park. Ashland used a four-run sixth inning and the hurling of Bob Lynch to down a stubborn Fairview squad, 5-1, as Louisa took full advantage of Holy Family's eight errors to dispose of the Irish, 7-2.

Louisa will now clash with Boyd County at 1 p. m. today in lower-bracket semifinal play while Ashland goes against Catlettsburg in the 3:30 p. m. upper-bracket semis. The championship game is set for 4 p. m. Friday with the winner advancing to the regional tournament at Morehead.

The first four innings of the Ashland-Fairview encounter saw a scoreless pitchers' battle between the Tomcats' Bob Lynch and Forrest Whitt of the Eagles. Ashland then picked up a solo run in the fifth and Fairview knotted the count with a tally in the top of the sixth only to see the Tomcats wrap up the victory with five markers in the bottom of the frame.

Lynch allowed Fairview only one hit, that being a run scoring single by Neil Collins, as the crafty Tomcat hurler recorded 13 strikeouts and issued only one base on balls.

Whitt, seeming to tire in the sixth when he gave up five hits, permitted the Tomcats a total of seven safeties. He fanned three

and walked two.

Lynch also set the pace for the Ashlanders at the plate with a perfect day. He rapped three hits in three trips to drive in three runs.

Bob Ison had the only extra base knock of the day, a double, while Steve Hemlepp rapped a single to plate two runs. Tim Huff and Fred Leibee had the other Tomcat hits, one-baggers.

	AB	R	H	RB	I
Fairview	23	1	1	1	
Collins, 3 b	3	0	1	1	
Whitt, p	3	0	0	0	
Thompson, ss	3	0	0	0	
Cooksay, cf	3	0	0	0	
Howard, rf	3	0	0	0	
R. Marcum, c	3	0	0	0	
Roark, 1b	2	0	0	0	
J. Marcum, 2b	1	1	0	0	
Hollingsworth, lf	2	0	0	0	
TOTALS	23	1	1	1	

	AB	R	H	RB	I
Ashland	25	5	7	5	
Mullins, lf	3	0	0	0	
Huff, 1b	4	1	1	0	
Ison, ss	3	1	1	0	
Hemlepp, c	2	0	1	2	
Leibee, 3 b	3	1	1	0	
Conley, rf	3	1	0	0	
Staten, 2 b	1	1	0	0	
Tackett, cf	3	0	0	0	
Lynch, p	3	0	3	3	
TOTALS	25	5	7	5	

Fairview 000 001 0-1 1 2
Ashland 000 014 x-5 7 1

E—Whitt, J. Marcum; Staten.
DP—Collins - Marcum - Roark.
LOB—Fairview 2, Ashland 6.
2B—Ison, SB—Staten.

IP H R ER BB SO
Whitt (6) 6 7 5 4 2 3
Lynch (W) 7 7 7 7 1 13
HBP—Hemlepp, Staten (Whitt).
U—Colvin—Felix

SPORTS

ASHLAND (KY.) DAILY INDEPENDENT THURSDAY EVENING, MAY 30, 1968

PAGE THIRTEEN

Ashland, Rowan County Gain Regional Finals

Championship Contest Rescheduled Today; Lynch Has 3-Hitter

By MALCOLM CONLEY
Independent Sports Editor

MOREHEAD — Ashland downed McDowell 3-0 and Rowan County edged Montgomery County 2-1 in the semifinals of the KHSAA Regional Baseball Tournament here yesterday but the weather man temporarily won the championship encounter.

Heavy rain and lightning arrived just before Rowan County and Ashland were scheduled to take the field for the title fracas and, after a delay of an hour and a half, the tilt was rescheduled for 4 p.m. today.

The Tomcats' victory came as a result of a nifty three-hitter by Bobby Lynch as the Ashland mound ace recorded 14 strikeouts while waling only two batters.

Each team had five hits in the first game of the day but Rowan County shoved across tallies in the fourth and fifth frames for the come-from-behind decision over Montgomery County.

An infield single by McDowell's centerfielder Jerry Moore in the first inning was the only safety the Big Sandy nine could manage off Lynch until the seventh when Tom Martin opened the frame with a single and was followed by a double to left off the bat of Sam Meade. Lynch then proceeded to strike out the next three batters to insure the victory.

Ashland, on the other hand, rapped eight hits off the hurling of McDowell's Tom Martin to score solo tallies in the first, fourth and sixth innings.

Tim Huff put Ashland on the scoreboard first when he blasted a triple into left field in the opening inning and came home as Bob Ison grounded out to the first baseman.

Ison scored the second run of the day for the defending state champions. He opened the fourth canto with a single up the middle and was sacrificed to second by Steve Hemlepp. A wild pitch gave him possession of third and he came home on John Mullins' sacrifice fly to right.

The Tomcat shortstop also accounted for the final run, opening the sixth with a two-bagger. He advanced on Mullins' fly to center and scored on a single by Joe Conley.

Ison with a double and single and Conley with two one-baggers led the Tomcat hitting effort with Huff's triple being the only other extra-base knock for the winners. Dave Cox, David Staten and Lynch rounded out the Ashland stick work.

Martin, in being dealt the setback, did a nice job for the McDowell nine keeping the Tomcats in check most of the way although he was not overpowering. His teammates gave him plenty of support as he fanned three and did not issue

a pass.

Yesterday's first tilt was typical of the mound efforts displayed throughout the tournament. Robert Wiggenton, smooth-throwing lefthander, displayed fine form in being dealt the loss while sophomore Mike Abner was impressive in picking up the win for Rowan County.

Montgomery pulled to an advantage with a run in the second inning. Second sacker Eddie Davis led off with a single to left and was sacrificed to second by Labon Richardson. Larry Donithan then plated Davis with a looper down the right field line.

The well-drilled Rowan County aggregation was not to be outdone, however. They picked up an unearned marker in the fourth to knot the count when Ronnie Skaggs was safe on a fielder's choice, advanced on an attempted putout of Larry Kegley, went to third on a passed ball and scored on an error.

An error on a ball hit by Donnie Greenhill and singles by eighth-grader Billy Fouch and James Cassity gave Rowan the deciding run in the fifth.

Jim Rogers had two singles to set the pace for the losing Montgomery County nine. Davis, Donithan and Gary Willoughby added the other singles.

James Cassity set the pace for Rowan County with a duo of one-baggers while Fouch, Greenhill and Steve Ramey contributed singles.

Abner recorded four strikeouts and walked one in getting the victory while Wiggenton fanned five and gave up two charity trips to first in being dealt the setback.

Ashland will be taking a 19-3 record into today's championship game while Rowan County is now 17-5.

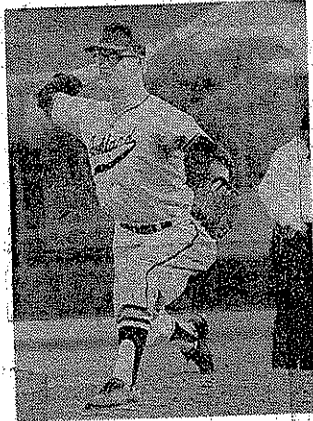
Tim Huff probably will get the mound call for the Tomcats while Steve Bumgardner is slated to start for Rowan County. Both are juniors.

MONT. CO. - 010 000 0-1 5 1
ROWAN CO. 000 110 x-2 5 1

Wiggenton and Rogers; Abner and Cassity.

McDOWELL 000 000 0-0 3 1
ASHLAND 100 101 x-3 8 1

Martin and Patton; Lynch and Hemlepp; 3B-Huff; 2B-Meade; Ison.



Staff Photo

BOB LYNCH of Ashland delivers a pitch in his two-hit, 3-1 victory yesterday over four-time champion Newport Catholic in the State Baseball Tournament semifinals in Lexington. Ashland and Southern play for the title today.

State Tourney Boxes

Ashland 3, Newport Catholic 1				Southern 2, Mayfield 0			
NEWPORT CATHOLIC				ASHLAND			
Player	ab	r	h	Player	ab	r	h
Waters lf	2	1	0	Cox rf	3	0	0
Klein cf	2	0	0	Huff lb	2	0	0
Gohs p	3	0	0	ison ss	3	0	0
Powers ss	3	0	0	Hemlepp c	3	0	1
Tombragel c	3	0	0	Wuolins cf	2	1	0
Mason rf	3	0	1	Conley lf	2	1	0
Emmerich lb	1	0	0	Liebe 3b	3	1	0
Bintz 3b	1	0	0	Siston 2b	2	0	0
Macke 2b	2	0	0	Lynch p	2	0	0
Totals	22	1	2	Totals	23	3	2
NEWPORT CATHOLIC 103 000 0-1 2 2				ASHLAND 320 000 3-1 0			
E-Gintz, Powers, Tombragel, LOB-Newport Catholic 3				E-Ashland, 2b-Hemlepp, Mason, 3b-Emmerich, Lynch, S-Klein.			
Pitcher				Pitcher			
Gohs (L, 4-4)	IP	H	R	ER	BB	SO	
Lynch (W, 10-0)	3	2	3	3	9	9	
WP-Lynch, PB-Hemlepp, Tombragel, Time-1:40.							
MAYFIELD				SOUTHERN			
Player	ab	r	h	Player	ab	r	h
Breadlove cf	3	0	0	Whelan 3b	3	0	0
Walker 3b	3	0	1	Mafford 2b	3	0	0
Brown lb	3	0	0	Chowning cf	3	1	1
Shelton c	3	0	0	Simms ss	3	0	1
Norris lf	2	0	0	Walden rf	2	0	0
Lankin rf	2	0	0	Vidotto lb	1	0	0
Linebaugh ss	2	0	0	Metcalf lf	2	0	0
T. Perkins 2b	2	0	0	Reisser p	2	0	0
Fowler p	2	0	0	Off c	2	0	1
Totals	21	0	1	Totals	21	1	2
MAYFIELD 000 000 0-0 1 2				SOUTHERN 000 002 X-2 3 1			
E-Walker, Whelan, Fowler, LOB-Mayfield 2				E-Walker, Whelan, Fowler, LOB-Mayfield 2			
Southern 2, 3B-Simms, SB-Chowning, S-Vidotto				Southern 2, 3B-Simms, SB-Chowning, S-Vidotto			
Pitcher				Pitcher			
Fowler (L, 5-1)	IP	H	R	ER	BB	SO	
Reisser (W, 6-2)	3	1	0	0	0	1	4
WP-Reisser, PB-Shelton, T-1:15.							

Lynch Two-Hits Newport Catholic

Ashland In Finals Again

By TIM KELLY
Herald-Dispatch Sports Writer

LEXINGTON, Ky. — Chalk one up for Bobby and Steve.

Ashland Paul Blazer's brilliant veteran battery of Bobby Lynch and Steve Hemlepp teamed Thursday to defeat Newport Catholic, 3-1, and advance the Tomcats to within one win of an unprecedented third straight state baseball championship.

Louisville Southern (20-7) is now all that stands in Ashland's way. Game time is 2 p. m. today at University of Kentucky Sportscenter.

Ashland will throw junior left-hander Tim Huff (5-0) against the Trojans' Gary Walden (4-1), a junior right-

hander with one no-hit game to his credit.

Southern advanced to the finals with two runs in the bottom of the sixth inning that ruined Mayfield pitcher David Fowler's no-hitter and sent the Cardinals home, 2-0.

Lynch's two-hitter against Catholic was his second straight semifinal victory over the Thoroughbreds. Last year, he shut them out on three hits, 2-0, while striking out eight and walking two.

Thursday, he fanned 10 and walked two in running his three-year state tournament record to 4-0 and his season record to 10-0.

And, oh, yeah, there's also the matter of the winning run — which Lynch knocked in

with a booming triple to right field in the third inning.

But, you see, he wouldn't have gotten the opportunity to hit the triple if it hadn't been for some gutsy play by his catcher, Hemlepp.

Two mistakes by Hemlepp in the first inning — a passed ball and an error — had given Catholic its only run, the first scored against Ashland in the Tomcats' last seven games, and had given Hemlepp the goat's horns.

The husky catcher led off the third with a double to left that took one short bounce before hurdling the fence.

Johnny Mullins then bounced to short with Hemlepp on the way to third. He was out by a good 10 feet

but barreled into Catholic third baseman Bill Bintz and rocked the ball out of his glove. Hemlepp was thus safe on third, and Mullins advanced to second in the confusion.

Joe Conley walked to load the bases before Fred Leibee forced Hemlepp at home on a grounder down the first base line. Dave Statea then fanned, leaving the bases loaded with two outs.

With Lynch batting, a passed ball brought Mullins home with the tying run. Then, Lynch unloaded his triple, giving him all the runs he needed in Conley and Leibee.

Ashland, now 22-3, had only one other hit off Catholic's

Frank Gohs, who also lost last year's semifinal game to Lynch. Conley singled to right in the fourth inning.

Gohs walked three and fanned five for the 'Breds, who finished at 19-10.

Catholic's only run came when the leadoff batter—Paul Watters—walked, went to second on the passed ball and to third on a sacrifice bunt. Gohs tried to squeeze bunt Watters home, but missed the pitch.

Hemlepp dropped the ball, picked it up ready to tag Watters, and then dropped it again, allowing the run to score.

Catholic got one hit in the second when, with two out, first baseman Dave Emmerich lofted a high fly to right that Ashland's Dave Cox misjudged. He then tripped going up the terrace. Emmerich was credited with a triple.

The other hit came with two out in the seventh when, with two strikes, Steve Mason blooped a short double down the right field line. Lynch fanned Emmerich to end the game.

NEWSPAPER: CATHOLIC, ASHLAND

At bat	12	12									
Runs	1	2	0	0	0	0	0	0	0	0	0
Hits	0	1	0	0	0	0	0	0	0	0	0
Errors	0	1	0	0	0	0	0	0	0	0	0
<p>E—Macke, Powers, Bint 2, Hemlepp. LOB — Newport Catholic 3, Ashland 4. 2B—Mason, Hemlepp. 3B—Emmerich. Lynch, SB — Mullins, Cox. S—Klein. IP H R ER BB SO</p>											
Gohs (L)	4.0	0	0	0	0	0	0	0	0	0	0
Conley	3.0	1	0	0	0	0	0	0	0	0	0
Walden	2.0	0	0	0	0	0	0	0	0	0	0
Macke	1.0	0	0	0	0	0	0	0	0	0	0
Tot. 22.1 2 0 1 0 21 3 0 2											
Newport Catholic	100 000 0-1										
Ashland	000 000 2-3										

Lynch said afterward, "I didn't feel I pitched a real good game. I wasn't throwing on the plate—I was going too high. And my breaking stuff was breaking too far."

He said he'd have to "wait and see," if he'd be ready for a possible relief appearance today. Lynch threw 111 pitches in 85-degree heat Thursday, compared with 88 pitches a year ago against Catholic.

Ashland coach Leonard Blanton called Hemlepp's third inning play the turning point. "They'd have beaten us if it wasn't for that," Blanton said. "Hemlepp got us into trouble, and got us out of trouble."

Ashland Champs For Third Straight Time, Tips Southern 1-0

Lynch, Mullins Key Victory

By MIKE RUEHLING

It took 10 innings to decide it, but for the third straight year Ashland won the State High School Baseball Tournament, yesterday edging Louisville Southern 1-0 for the championship.

Like the past two years, it was righthander Bob Lynch who came through in the final game. Yesterday, Lynch picked up starter Tim Huff in the sixth inning with two out and pitched 1-3 innings of hitless relief.

Last year, Lynch won Ashland's first two games and then pitched a save in the 7-2 title game against Fort Knox. John Sieweke finished up for Lynch in the 1961 game. In 1962 as a sophomore, Lynch stopped Shelby County 2-1 for the state crown.

The game might have lasted longer than the three extra innings if Ashland had not received an unexpected break when Southern catcher Mark Ott threw high to second base, trying to catch Huff in the process of stealing.

Huff, who opened the 10th with an infield single, ended up on third base. Then Southern's Mike Riffe intentionally walked the next two batters, Bobby Ison and Steve Hemlepp, to load the bases and set up a force play at home.

But sophomore John Mullins spoiled Southern's strategy by lining one of Riffe's soft curves perfectly for a run-scoring single to left field. It was Mullins' second hit of the tournament.

Riffe, who hurled a three-hit shutout in Southern's 2-0 victory over Greensburg yesterday, did not start yesterday. But he pitched as well.

Riffe took over for Gary Walden in the first inning after Walden had issued a single and a walk. Riffe was not as effective as in the Greensburg game, but still struck out seven while giving up seven hits.

Riffe's control was not as sharp. He walked five yesterday, as compared to none against Greensburg.

Riffe was in trouble in the third, fourth and seventh innings, but each time escaped unscathed.

out to third and end the inning. Again in the seventh, Ashland had runners on first and second after two walks (the second one intentional to Lynch) but Riffe made meek outs of David Cox and Huff to keep his shutout intact.

Only two runners reached base against Lynch, and he was directly responsible for each by one. Lynch fielded Dom Simms' slow roller to the mound in the eighth and then threw over the first baseman's head, putting Simms on first. But he was left stranded.

In the top of the 10th, Lynch hit Ott on the arm with a pitch to open the inning. Huff set down the next three batters to stop any Southern dreams of scoring.

Huff gave up two hits—a third inning single to Richard Chowning and a sixth inning single to Dave Videtto. It was Videtto's single that brought in Lynch.

"Before the game we decided if anybody got to second base we were bringing in Bobby Reisser," said coach Leonard Blanton. "After that hit, I turned around and there was Bobby, already on the way to the mound."

Lynch struck out pinch hitter Mike Reisser to end the inning and needed only seven pitches to retire three Southern batters in the seventh. He struck out Riffe and Ott and got Charles Whelan to hit the first pitch back to the mound.

"Our boys just couldn't get the hits," said Southern coach Mike Dubick. "That was a tough one for Mike to lose. He did a great job."

"We came down here to win it and we did," Ashland coach Blanton repeated. "We only lose three seniors—Lynch, Hemlepp and Ison—so we could very well be back next year."

Lynch finished his senior year with an 11-0 record. Ashland ended up 23-3.

Riffe's final record was 10-2. He also is a senior. Southern's record is 21-6.

In the third, Huff doubled with one out but was thrown out at the plate trying to score on a ground ball hit to Southern shortstop Dom Simms. Simms earlier executed a smooth double play in the second inning when Ashland was brewing a threat.

More trouble came Riffe's way in the fourth. Fred Lobbes singled with two out and then Riffe struck out David Statem. However, the ball got away from catcher Ott, who finally found it, and then sailed it into the outfield.

Riffe remained cool and forced Ashland's Bo Carter to ground out.

Player	AB	R	H	E
Lynch	9	1	1	0
Mullins	4	1	2	0
Merrill	2	0	1	0
Chowning	4	0	1	0
Statem	4	0	1	0
Whelan	2	0	0	1
Reisser	1	0	0	1
Ison	3	0	0	1
Hemlepp	3	0	0	1
Carter	3	0	0	1
Lynch	1	0	0	0
Ott	3	0	0	0
Totals	34	2	7	5
Ashland	10	1	10	1
Southern	24	1	6	4

Louisville Southern 1-0 Victim In Ten Innings

Tomcats Win 3rd Straight State Baseball Title

By TIM KELLY

LEXINGTON, Ky.—Ashland Paul Blazer's Bobby Lynch and Joe Conley, a feared backcourt combination in basketball, walked arm-in-arm off the University of Kentucky Sportscenter baseball field Friday afternoon.
"Joe, what's say we tell them we don't want to graduate so we can come down here next year and win a fourth one?" Lynch asked.
"All right by me," Conley replied.
That's the spirit that has car-

ried Ashland Tomcats to an unprecedented third straight State baseball championship, gained Friday in a thrilling 1-0, ten-inning victory over Louisville Southern.
And it was a victory for many people.
It was a victory for Lynch, who pitched four and one-third innings of near-flawless relief ball to gain the win—his fifth in State tournament competition.
It was a victory for sophomore Johnny Mullins, whose bases-loaded single in the tenth won the game.
It was a victory for Conley,

shortstop, Don Ison, second baseman Dave Stater and third baseman Fred Leibe — all of whom came up with clutch fielding gems.
It was a victory for slender left-hander Tim Huff, who checked Southern on two hits for five and two-thirds innings, and who scored the winning run.
To be sure, it was a victory for first-year coach Leonard Blanton, for all the members of the team and for the high school.
But most of all, it was a victory for the city of Ashland and its youth baseball program.

Lynch was the only regular back from the 1966 state champs, while he, Ison and catcher Steve Hemlepp were the only regulars back from last year's champs.
The reason the Tomcats were able to bounce back from such losses by graduation is simple. Every member of this year's team came up through Ashland's Little League-Babe Ruth League-American Legion feeder system.
And, the nice thing about it is, the only regulars who won't be back next year are Lynch, Hemlepp and Conley — all of

whom made all-state as did Huff, a junior.
Ashland, which finished 23-3, scared Southern early with Dave Cox hitting a single to left and Huff drawing a walk to lead off the game. That knocked out Southern's starter, Gary Walden, and brought in left-hander Mike Riffe, who pitched a complete game in Wednesday's opening round.
That first-inning threat died with Cox on third and Huff on second, as did threats in the second, third, fourth, seventh, eighth, and ninth. The Tomcats ran rubbers on third base in

the third and fourth but Huff, who had tripped, was cut down at the plate on a grounder in the third and Leibe died on third in the fourth.
Huff slid into first base to lead off the tenth with a bunt single. He took off for second, but Southern catcher Mark Ott unloaded a throw over the shortstop's head and Huff wound up on third.
Riffe intentionally walked Ison and Hemlepp to load the bases with no outs. Then, Mullins lined a sinking curve ball down the left field line to score Huff and end the game.

Aside from Huff's triple and single, other Tomcat hits — all singles — were by Cox, Hemlepp, Conley, Leibe and Stater. Ashland left 13 men on base.
Huff fanned five and walked four before yielding to Lynch with two outs in the sixth after Southern had put men on first and second by a walk and the Trojans' second hit. Lynch fanned pinch-hitter Mike Reiser to end the inning.
Southern, which finished at 20-3, seriously threatened only once after that, in the eighth grounder, putting Don Simms on second. Lynch then got Walden to bounce out third to end the inning.
Lynch walked none, allowed two hits and struck out seven in ten innings. He also pitched a complete game. Three days earlier he had pitched a complete game against Newport Catholic.
Lynch, a 6-0, 215-pounder, pitched and won the championship game two years ago as a sophomore, won two games in the tourney last year and was the pitcher of record when the winning run was scored in the title game against Fort Knox.

LOUISVILLE SOUTHERN		ASHLAND	
AB	R	AB	R
Walden, 3b	4 0 0 0	Cox, rf	3 0 0 0
M'gor, 2b	4 0 0 0	Huff, p	5 2 0 0
C'ing, rf	4 0 0 0	Ison, ss	3 0 0 0
Simms, ss	4 0 0 0	Hemlepp, c	4 0 0 0
Walden, p	3 0 0 0	Mullins, cf	0 0 1 0
Vidette, lb	4 0 0 0	Conley, lf	3 0 0 0
Metcalfe, lf	2 0 0 0	Leibe, 3b	1 0 0 0
Reisse, lf	2 0 0 0	Stater, 2b	2 0 0 0
McNeil, rf	0 0 0 0	Conley, 3b	1 0 0 0
Rife, c	4 0 0 0	Lynch, p	4 0 0 0
OH, c	3 0 0 0		
Total	34 0 2 0	Total	32 2 1 0

None out when winning run scored.

Louisville Southern 200 200 200
Ashland 200 200 200
E-ON (2), Ison, Lynch, DP — Simms to Vidette, LOB — Lou. Southern 9, Ashland 11. 3b — Huff, 5B — Cox. IP: H-R-E-R BB SO
x-Walden 0 1 1 0 0 0
y-Riffe (L) 9 1 1 0 0 0
Huff 5 3 2 0 0 0
Lynch (W, 11-0) 4 1 3 0 0 0
Riffe (L) 2 0 1 0 0 0
Total 25 2 5 0 0 0
Riffe, 5B — Cox. IP: H-R-E-R BB SO

win of this season without a loss.

Aside from Lynch, Conley, Hemlepp and Huff, other all-state selections were second baseman Charles Mefford of Southern, third baseman John Walker of Mayfield, shortstop Steve Simms of Southern, outfielder Mike Shivers of Southern and pitcher Dave Stater of Southern.

Ashland Again Wins State Title

By BOB WHITE

Courier-Journal & Times Staff Writer

LEXINGTON, Ky.—Maybe Johnny Mullins was just due to get a hit, or perhaps it was time Southern's stubborn defense finally yielded a run.

Anyway, Ashland High is the state baseball champion for an unprecedented third consecutive year.

After 10 tension filled innings yesterday, Ashland pushed across a run on a bases-loaded single by Mullins to edge Southern 1-0 in the 28th State Tournament final at the University of Kentucky Sports Center.

Until Mullins' solid poke past the outstretched glove of third baseman Charles Whelan, Southern's pitching staff had not allowed a run in 23 innings during the tournament.

Huff Starts Rally

Tim Huff began Ashland's winning rally with an infield single. Topping a pitch by Southern left-hander Mike Riffe in front of home plate, Huff beat Riffe's throw by sliding into first base. Huff later tried to steal second and when the throw by catcher Mark Ott went into center field, the Ashland runner raced to third.

With no outs, Southern coach Mike Dubick ordered Riffe to purposely walk Bobson and Steve Hemlepp. "I had no

other choice," Dubick said afterwards. "By loading the bases, we made it harder for them to execute the squeeze play and made a force play at home possible."

Southern, though, was denied its first state title in a major sport when Mullins, who had gone 0-for-4 in his previous at-bats, smacked "a curve ball, a little above the knees," he said later, into left field.

"I knew they'd walk Hemlepp since he had gotten a hit his last time at bat," said Mullins, a sophomore who shut out

Madison Central on one hit in Wednesday's first round. When he's not pitching, Mullins plays center field because "he's a good long-ball hitter," explained Ashland's rookie coach, Leonard Blanton.

Ashland Finishes 23-3

The victory, Ashland's 23rd in 26 games this season, went to senior right-hander Bob Lynch, who held the Jefferson County champions hitless the final 4 1/3 innings after relieving Huff with

two outs in the sixth and Southern runners on first and second.

"We had the other pitcher (Huff) on the ropes when they brought in Lynch," said Dubick. "Lynch is real quick and did a nice job after pitching seven innings Thursday." Lynch, who finished with an 11-0 record, beat Newport Catholic 3-1 on a two-hitter in the semi-finals.

"We just couldn't hit," said Dubick. "In fact, we couldn't even bunt a man into scoring position."

In Southern's 10th, Ott reached first when hit on his throwing hand by Lynch pitch. Whelan, however, popped out to third trying to sacrifice. Bob Melford, also attempting to advance Ott to second, looked at a third strike before Richard Chowning flied out to left.

Southern Gets Only 2 Hits

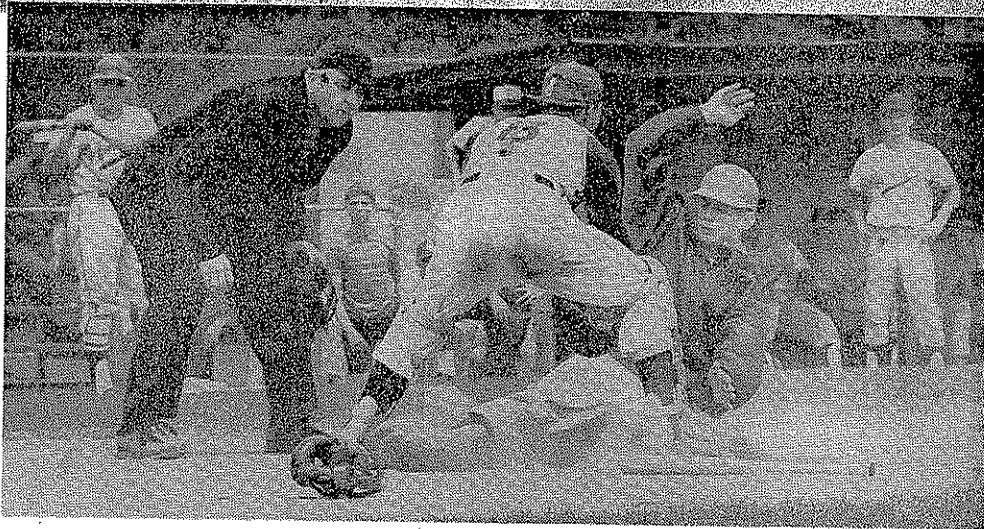
Southern, losing for the eighth time in 28 starts, had only two hits, a third-inning single by Chowning being the first. Dave Videtto singled off Huff in the sixth. Then, Lynch came in.

The hard-luck loser was Riffe, a curve ball specialist who replaced Gary Walden with no outs and two Ashland runners on base in the first inning. Riffe, who scattered seven hits, had pitched 16 straight scoreless innings before the 10th on Wednesday, he handcuffed Greensburg 1-0 on three hits.

"I couldn't ask for any better job than Riffe did," Dubick said. "He kept us in the game, but our hitting let him down."

Ashland and Southern each placed four players on the 10-man all-tournament squad. Representing Ashland were Lynch, Huff at first base, outfielder Joe Conley and catcher Hemlepp.

Southern players honored were Riffe, second baseman Melford, outfielder Chowning and shortstop Dominick Simms. Third baseman Johnny Walker, of Madison Central, and outfielder Steve Mason, of Newport Catholic, rounded out the team.



Staff Photo by Charley Pence

Southern catcher Mark Ott tags out Ashland's Tim Huff in third inning yesterday.

Prep Talk

By MIKE RUEHLING
Herald Sports Writer

It Was Like This

The 1968 State High School Baseball Tournament was a hitter's nightmare. It belonged to the pitchers all three days.

In seven games there was a total of 49 hits, an average of seven hits a game. In these seven games, a total of 24 runs were scored.

Four of the games, including the final, were shutouts. Ashland's pitching staff turned in the best overall effort. In 21 innings, Tomcat hurlers allowed one unearned run, and five hits.

Sophomore John Mullins pitched the best individual mound effort for the Tomcats, statistically, hurling a one-hitter in Ashland's first round 6-0 victory over Madison Central. Senior Bobby Lynch pitched 11 1-3 innings and allowed two hits, both to Newport Catholic. Newport Catholic also scored the only run on Ashland.

Battling was a different story. Even though state champion Ashland batted .195 as a team for the tournament, it was still the second best effort of any of the eight participants. Greensboro, a 3-2 victim of Newport Catholic in the first round, led the tournament batting with a respectable .250 team average (six hits in 24 official at-bats).

Ashland had 17 hits in 87 at-bats. Of the 17 hits, two were doubles and two were triples. Mike Tackett had a two-base hit against Madison Central and Steve Hemlepp had a double in the Newport Catholic game. Lynch had a triple against Catholic and Tim Huff had a triple in the final against Louisville Southern.

There was not a home run hit this year by anyone.

Last year Ashland did not bat any better. In three games the Tomcats had 18 hits in 86 trips to the plate—a .186 team average.

Southern, the other finalist, batted .168 as a team with eight hits in 74 trips to the plate.

Southern coach wasn't kidding before Southern's first tournament game when he said, "We won't win many games with our bats."

Ashland's Joe Conley (3-9) and Mayfield's Jim Shelton (2-6) and John Walker (2-6) were the leading hitters among the regulars in the tournament, each batting .333.

Next to Ashland, Southern pitchers were the stingiest with this.

In 23 innings Southern hurlers Mike Riffe, Mike Reisser and Gary Walden allowed a single run (it was earned) and gave up 12 hits, eight to Ashland in the championship game.

Very impressive was Mayfield's Bobby Perkins also left the mark, stopping Russell County 4-1 on two hits.

Assistant High School Athletic Commissioner Joe Billy Mansfield said that the 1968 tournament drew the biggest crowd in its 23-year history.

"We haven't received the official totals yet but I know that we had about twice as many people than last year," Mansfield said. "I do know it was the best crowd we've ever had at the tournament."

Asked about reports that the tournament would be moved to Louisville next year, Mansfield replied, "Nothing definite has been decided on that, yet."

Possibly the most surprised person in the tournament was Southern pitcher Mike Riffe in the eighth inning of Friday's championship game with Ashland.

Riffe arched a breaking curve ball which bounced in front of the plate, got away from catcher Mark Ott and struck umpire Jim Johnson hard on his leg.

The second most surprised person in the tournament was Ott who watched Johnson, hopping around on one leg, take the ball away from him and rifle it back to the unsuspecting Riffe.

Riffe was so startled that he backed off the mound and finally broke into a wide grin.

Two pitches later Johnson was hit on the hand with a foul tip. That evened the score.

Two Ashland players made Lexington Little Leaguers, Gary Simpson and John Vice, two very happy youngsters.

Amidst the celebration after Ashland's 1-0 victory over Southern for the championship, Gary and John, the official ball boys of the tournament who were responsible for tracking down stray fouls, made a polite request of Ashland's Bob Lynch and Steve Hemlepp, the Tomcats' winning battery.

"Can we have your hats, the pair asked somewhat hesitantly.

"Why not," answered Lynch taking off his hat. "Give them your's, too Steve. We won't need them any more."

"Sure," said Hemlepp, offering his hat to John, a 12-year-old catcher with the Central League Angels. Gary, a pitcher, ended up with Lynch's hat.

"I'm gonna hang it on my wall," Gary said. "Look, it even got his sweat in it."

June 10, 1968

Ashland Wins 92-73

Lynch Has 22 To Top Tomcats

By MALCOLM CONLEY
Independent Sports Editor

Ashland's Tomcats staged their home opener last night and it was a successful one.

Taking the lead early in the first quarter, the Tomcats were never headed as they halted Olive Hill's four-game winning streak, 92-73.

It was the second consecutive victory for Ashland, rated 13th in the state in today's first Associated Press poll, while the setback leaves Olive Hill's season mark at 9-2.

A strong defensive effort on the part of the Tomcats forced Olive Hill to make a number of mistakes which the hot-shooting Ashlanders converted into game-deciding buckets. The home team finished with a 58.8 percent shooting mark on its 82 shots from the floor. The Comets were limited to only 64 field goal attempts, hitting 29 for a 45.6 mean.

"We made too many mistakes and a small club like our can't make errors and win, particularly against a fine team like Ashland," Olive Hill Coach Jack Pultz commented. The Comets were charged with 19 turnovers.

Rebounding also played an important role in the outcome. Ashland received a balanced effort from its squad in the board work to finish with a distinct 55 to 26 edge in caroms. Leading the rebounding for Ashland was 5-11½ senior guard Bobby Lynch who had 15 rebounds with pivotman Mike Griffith adding 10.

Lynch also led the balanced scoring attack for Ashland as he hit the cords for 22 points. Following Lynch in the point-production department was Ray Kleykamp, who turned in a fine performance while pumping in 20 markers.

Joe Conley added 13 to the winning attack while sophomore John Mullins was coming through with 10 tallies.

Olive Hill used only five players throughout the contest and they each wound up in the twin-digit category. Greg DeHart was tops with 19, James Duncan added 17, John Waggoner 13 and 12 each by Lee Dickson and Johnny Brown.

"It was a good, scrappy effort on the part of our entire team," Ashland Coach Harold Cole said, echoing the importance of Ashland's depth. "Our bench strength showed up last night and I believe it was an important factor in the win," he said. All 16 members of the Tomcat team saw action.

Duncan and Waggoner sank game-opening free throws to give Olive Hill the initial advantage as the Comets' zone defense kept the Tomcats outside and limited them to one shot from the floor in the first minute of action.

With Griffith and Kleykamp beginning to take charge of the boards, Ashland's defense forced several Olive Hill turnovers and Lynch hit from underneath to give the Tomcats their first lead, 6-5, with three minutes having elapsed in the contest.

Scoring 11 of the next 12 points via a fast-moving attack, Ashland began to pull away with Roger Baldridge's goal just before the horn making the first period score 26-13 in favor of the home quintet.

After Duncan hooped a dip of charity tosses, Kleykamp countered with two field goals before Ashland suffered a momentary offensive lag. Regaining their momentum, however, Roger Baldridge, Kleykamp and Lynch gave Ashland the next eight points and the Tomcats were off in stride again. Fred Leibe hit on a perfect pass from Joe Conley just before the horn to leave Ashland in front 50-28 at intermission.

The third quarter left a little to be desired on the part of both club's performance. Neither was able to hit with any degree of accuracy and both played erratically. With DeHart and Dickson leading the way, Olive Hill outscored Ashland 20-16 in the frame, shaving the difference to 66-48.

Reserves saw the main part of action for Ashland in the final eight minutes, which was a methodically more smoothly-played period than the third quarter. Ashland managed to take a 26-25 edge in the period scoring with Jeff Cooksey, 6-5 sophomore, accounting for the final two points of the tilt.

Ashland (92) — Lynch 22, Conley 13, M. Griffith 9, Mullins 10, Kleykamp 20, Baldridge 4, Leibe 2, Tackett, Huff 2, R. Griffith 2, Owens 4, Cooksey 2, Hagaman 2, Salyer, Falley, Hay.

Senior Year

BASKETBALL

1967-1968

ASHLAND DAILY INDEPENDENT
Sports

ASHLAND (KY.) DAILY INDEPENDENT, SUNDAY MORNING, DECEMBER 10, 1967

Ashland Bombs Catlettsburg 117-58

For Third Win

Guard Duo Paces AHS Victory

By DAVID REED

Independent Sports Writer

Ashland's guard combination of Bob Lynch and Joe Conley worked well together again Saturday night as the Tomcats rebounded from Friday's defeat at the hands of Portsmouth to romp 117-58 over Catlettsburg.

Lynch and Conley, seeing limited action as Ashland rolled up its big score, combined for 44 points with Lynch getting 23 and Conley 21. The two put together a floor show of ball handling combined with a sticky defense that accounted for 33 Catlettsburg turnovers.

It was no contest after a brief OHS threat early in the game as the Tomcats upped their record to 2-1. Ashland rolled up an 8-2 lead with Catlettsburg pulling within two points at 8-6.

After that it was time for the Tomcats to shine. Ashland racked up a 24-4 advantage in the first period and stretched the lead to 58-21 at the half by forcing Catlettsburg into costly mistakes.

Ashland was paced by Mike Griffith in the second frame when he tallied 29 points. Griffith scored 10 points in the quarter and provided the Tomcats with a good rebounding effort.

The Tomcats saw Lynch and Conley turn on the steam in the third and come up with 33 points to Catlettsburg's 11. With the score 84-23, Ashland pushed in 11 points before Catlettsburg could get on the scoreboard again.

With the reserves seeing plenty of action, Ashland outpointed the visiting Wildcats 31-25 in the final frame. That quarter saw numerous foul shots as the score continued to rise.

Ashland's Greg Salyer came off the bench and poured in 14 points, all of them coming in the fourth quarter. Fred Leisbee, another substitute, tallied 10 points, including the goal good for the 100th point. Mike Griffith finished with a 17-point total.

Steve Spears, a 5-11 senior, provided Catlettsburg with its best offensive effort, Spears, hitting well on shot jumpers, had 21 points for the Wildcats with Roger Zornes and Don Adkins each getting 13.

Ashland made 42 of 94 field goal attempts while Catlettsburg could only muster 59 shots and connected on just 17 of them.

Each team scored big on free throws, with Ashland getting 33 points via the charity line, while taking 41 shots. Catlettsburg made 24 of 36 attempts.

The two squads were to have met earlier in the year in Ashland's opener but the game was postponed until last night due to the death of a Tomcat player.

Catlettsburg fell to 1-4 with the loss. The charges of Coach Wendell Wheeler take on McKell in the Northeastern Kentucky Conference Wednesday night.

Ashland plays host to Fairview Tuesday and Ironton next Saturday.

Coach Bill Fultz' sophomore team also had little trouble in disposing of Catlettsburg's "B" team and took a 58-25 decision.

Catlettsburg (58) — Ross, Zornes 13, Spears 21, Adkins 13, Harper, Rooker 2, Laifon, Johns 7, Webb 2. FT: 24-36. PF: 25.

Ashland (117) — Lynch 23, Conley 21, M. Griffith 17, R. Griffith 4, Salyer 14, Foley 2, Kleykamp 4, Baldrige 4, Owens 2, Tackett 2, Liebee 10, Huff 6, Hagaman, Haywood 2, Mullins 6. FT: 33-41. PF: 24.
CATLETTSBURG 9 12 12 25—58
ASHLAND 24 29 33 31—117

'Cats Nipped, 73-72

Hawkins' Foul Shot Is Margin

By TIM MASSEY

Herald-Dispatch Sports Writer

Greg Hawkins sank the first shot of a one-and-one free throw situation with three seconds left to give Huntington High a hard-earned 73-72 victory over inter-state rival Ashland, Kyer at Memorial Field House Tuesday night, erasing a valiant Tomcat comeback and a brilliant 35-point performance by Bobby Lynch.

Down 53-44 going into the final quarter, the Tomcats put on a panic press in the last five minutes and almost pulled out the decision. Ashland substitute Roger Baldrige knotted the score at 72-72 on a 10-foot jumper with 20 seconds left. It was as close as the Tomcats had been since early in the first quarter when they led 11-10.

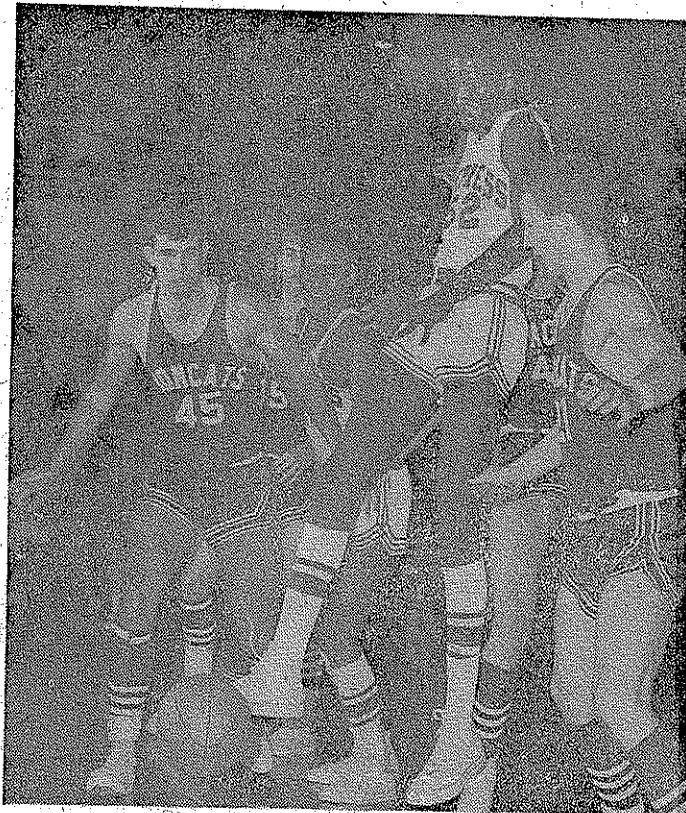
Ashland's press came up with the ball with 14 seconds left, but Ray Kleykamp was called for a hotly-contested backcourt violation to turn the ball over to HHS.

The Ponies held the ball until eight seconds were remaining. Hawkins, a versatile 6-3 junior, then drove for the basket and was fouled by Baldrige with three seconds left. Hawkins sank the first free throw but missed the second and Baldrige rebounded.

Ashland called time with one second showing on the clock, but an inbound pass was intercepted by Huntington's Pat Jackson to end the contest.

This ended an uphill battle by the Tomcats that saw tempers flare between both players and the coaches. Ashland's Harold Cole and Huntington's Jim Ward.

Big Bernard Williams led the balanced HHS attack with 22 points, coming on a remarkable 10 for 13 shots from the floor and two for four from the charity stripe. The 6-5 junior also hauled down nine rebounds. Leonard "Chunker" Smith, after two lack-luster performances, pumped in 22 points while consistent guard Camp-



Rebound Eludes HHS' Center Bernard Williams (5-2)

Ashland's Griffith (45), Mullins (21), HHS' Smith vie for loose ball

Staff Photo by Howard C. ...

bell Wall added 15 and Hawkins 11.

Lynch, an all-around athlete with a variety of shots and poise to burn, sank 16 of 27 floor attempts but he got little scoring help from his teammates. Joe Conley, one of the Tomcats' leading scorers, had an off night and wound up with

just six points, and John Griffith, hampered by foul trouble, managed only seven.

The victory was the Ponies' third in four starts. The Tomcats are 5-2 on the season.

Both teams shot well from the field. Ashland sank 36 of 70 attempts for 42.8 per cent.

while HHS hit 30 of 67 tries for 44.8 per cent.

The taller Ponies won the battle of the boards, outbounding the Kentuckians, 38 to 36. Hawkins led both teams with nine grabs.

ASHLAND				HUNTINGTON			
G	F	T	P	G	F	T	P
Lynch	16	33	35	Williams	10	24	25
Conley	3	6	6	Wall	7	13	15
Kleykamp	2	11	5	Smith	8	5	11
Mullins	3	9	8	Hawkins	3	5	11
Griffith	2	3	7	Jackson	1	0	2
Baldrige	2	0	0	HHS	0	0	0
Hut	0	0	0	Crank	1	0	1
R. Griffith	2	5	9				
Tot.	36	107	72	Tot.	30	67	72
Ashland				Huntington			
					16	17	15
					46	19	18
					12	17	15

Officials: Venable and Priede
 fouled out—None
 Total fouls—Ashland, 18, Huntington, 11

SPORTS

SATURDAY EVENING, JANUARY 20, 1968

PAGE FIVE

AHS Edges Inez 68-65 For 10th Win; Lynch Has 27

Trojans To Play Here Tonight

INEZ — Ashland's Tomcats ran into a group of hot shooting Inez Indians here last night but managed to emerge with a 68-65 decision.

For the Tomcats, of Coach Harold Cole it was victory number 10 in 18 outings. The Ashlanders will be trying for their fifth win this evening when they entertain a strong Wheelright quintet at 8 o'clock on the Paul Bizer High School hardwood.

Inez hit just under 50 per cent of its shots from the field in the tightly-contested affair. The longest lead of the game was a nine-point advantage maintained by Ashland midway the second quarter.

The score was tied seven times and the lead changed hands 10 times in the fracas.

Bob Lynch set the pace for the Tomcats as the versatile senior guard scorched the boards for 27 points. Pivotman Mike Griffith was the only other member of the Tomcats' squad in double figures as he hit for 17.

Inez had four players in the twin-digit category. Gary Meade, a sophomore, pumped in 13 tallies while A. J. Haney added 14, Bill Endicott 12, and Roger Harless 10.

The outcome was still in doubt down to the closing seconds as Ashland found itself trailing 61-58 at the midway point in the final quarter.

Lynch and Griffith then hit back-to-back goals to give Ashland a 62-61 lead with two and a half minutes remaining.

After Lynch stole the ball, the Tomcats began playing deliberate ball but Inez gained possession on a turnover. Meade came down and fired one up which bounced off into the hands of Roger Baldridge.

A walking violation, however, again cost Ashland the ball with 1:00 left. Inez missed a shot and Griffith grabbed the rebound for the Cats.

Joe Conley then pumped one in for the Tomcats but Meade hit for Inez to reduce the difference back to one. Baldridge caged a layup with 14 seconds showing but again Meade countered for Inez.

Then Baldridge put the game out of reach when he sank a duo of free throws with two seconds left.

Inez jumped to a 2-0 lead in the first quarter but Jerry Owens, in his first starting role, and Griffith picked up buckets to send Ashland into the lead and they were never headed in the frame. They led 15-12 at the end of the initial stanza.

The Tomcats began to pull away in the second canto, tripling their margin to as much as nine, but Inez came battling back. The Indians scored the last eight points in the frame with Meade's charity throws sending the home team ahead 34-32 as the teams left for the dressing rooms at half time.

The third quarter was a nip-and-tuck affair with the score being tied three times and the lead shifting seven times. Ashland outscored the home-standing Indians 22-16 in the stanza with Lynch accounting for 12 of the Tomcats' tallies.

Ashland's 64-50 advantage at the end of the third period proved very valuable since Inez had a 15-14 edge in the final quarter scoring.

The Tomcats shot 44 per cent, hitting on 28 of 64 attempts and they outrebounded Inez, 40-28. Lynch and Baldridge each had 11 grabs for the Tomcats with Griffith getting 10.

Ashland was guilty of 12 fouls over the night.

Ashland (68)	Lynch 27, Conley 9, M. Griffith 17, Baldridge 8, Owens 6, Mullins 1, PF: 17, FT: 12-16
INEZ (65)	Haney 14, Meade 19, Horn 9, Endicott 12, Harless 10, Procco, PF: 11, FT: 12-22
ASHLAND	15-17 22 42-50
INEZ	12-22 14 15-45

Cool Hand Lynch Strikes, 77-73

Tomcats Nip Russell

By TIM KELLY

Herald-Dispatch Sports Writer

ASHLAND, Ky. — Forget that man they call Cool Hand Luke, people. Cool Hand Lynch has struck again.

Bobby Lynch, a 5-11 senior whose list of credits includes pitching Ashland Paul Blazer to a pair of state baseball titles, Tuesday night did something equal that in basketball, at least in the eyes of Ashland fans.

He beat Russell. He didn't score the winning points. But the two he scored on a 15-foot jumper with four seconds left sent the game into an anticlimactic overtime. And Ashland won it, 77-73.

A more-than-capacity crowd of over 2,700 saw Ashland up its record to 12-6 and Russell's drop to 9-4 in a battle of the 16th Region's top two contenders.

Lost in the shuffle was a brilliant 30-point, 29-rebound performance by Russell's 6-8 Tom Roberts.

Lynch led Tomcat scorers with 22 and rebounders with 14.

His running mate at guard, Joe Conley, followed closely with 21 points while center Mike Griffith netted 17. That trio accounted for all Ashland points in the third period, all but two in the fourth period and all but two in the overtime.

Tookie Helton followed Roberts in both scoring and rebounding for Russell with 21 points and 11 rebounds. Lanny Miller added 12 points. Roberts and Helton accounted for all but two of Russell's fourth-period and overtime points.

Russell had a whopping 51-28 rebounding edge. The Red Devils also outgated Ashland, hitting 31 of 73 from the field to the Tomcats' 29 of 63.

Ashland, though, made 19 of 30 free throws to 11 of 14 by Russell.

Russell, with Roberts getting 10 points and seven rebounds, had an 18-11 lead after the first period that lengthened itself to nine points twice in the second period before Ashland started coming back.

Six quick points by John Mullins got the Tomcats back to 23-18. Four more by Conley and four by Lynch got Ashland its first tie since the opening seconds, with 2:58 left until halftime, 28-26.

Five lead changes and three ties later, Mullins hit a 10-foot shot from the right of the lane with four seconds left to give Ashland a 36-34 halftime advantage.

Russell was effectively blocked from its offensive boards and forced to shoot from outside the third period. The shooting wasn't so hot (3 for 15), the Devils didn't get many second chances and Ashland moved out to a 58-45 lead

going into the fourth quarter.

Roberts got eight points and Helton four, bringing Russell back to within two, 59-57, at 5:04. The Red Devils didn't catch up until there were only 48 seconds left and the score 67-67.

Lynch missed a free throw with 44 seconds left. Russell got the rebound and stalled until Helton drove the right side of the lane with 19 seconds left to make it 69-67.

An Ashland turnover gave Russell the ball and with 12 seconds to go, Helton was fouled. A time-out intervened before Helton missed the shot on the bonus situation. The ball went out of bounds to Ashland and, eight seconds later, Lynch hit from the right of the key to tie it.

The teams traded goals at the start of the three-minute overtime, but Conley made two free throws at 2:07, Griffith a hook at 0:55, and Griffith a lay-in at 0:12, before Russell could score again on a followup tip by Helton at the buzzer.

RUSSELL				ASHLAND			
	G	F	T		G	F	T
Roberts	12	6	30	Lynch	8	16	27
Helton	10	1	21	Conley	8	10	21
Miller	5	3	12	M. Griffith	5	7	17
Wover	2	0	4	Mullins	4	6	14
Fosson	1	2	4	B'ridge	2	3	6
McCain	0	0	0	K'amaal	2	2	14
Conley	1	0	2	Owens	0	0	0
Total	31	11-14	73	Total	29	19-30	77
Russell				Russell			
Ashland				Ashland			
Total fouls: Russell, 21; Ashland, 12.				Total fouls: Russell, 21; Ashland, 12.			
Field goals: Russell, Fosson, Wover, McCain, Owens, Johnson.				Field goals: Russell, Fosson, Wover, McCain, Owens, Johnson.			
Free throws: Helton, Conley, Mullins, B'ridge, K'amaal, Owens, Johnson.				Free throws: Helton, Conley, Mullins, B'ridge, K'amaal, Owens, Johnson.			

SPORTS

WEDNESDAY EVENING, JANUARY 31, 1968

PAGE SEVENTEEN

A. H. S. Halts Maysville 69-65 For 6th Straight

Lynch, Griffith Score 18

By MALCOLM CONLEY,
Independent Sports Editor

Ashland survived a 32-point production by Robert Anderson and a closing-minute surge by Maysville to score a 69-65 win here last night.

It was the sixth straight decision for Coach Harold Cole's Tomcats, running their record for the season to 14-6. The loss puts Maysville's mark at 12-4.

The Tomcats, who led all the way with the exception of two brief stints in the second period, had built up an 11-point bulge midway through the fourth quarter before Maysville began trimming the difference.

With Anderson and Vincent Thomas leading the way, the Bulldogs outscored Ashland 7-3 in the next two and a half minutes to trail 67-61 with 1:30 left.

Henry Boone then caged a lay-up following a steal and the advantage had been narrowed to four. A pair of technical fouls made the game even closer.

A technical was called on Ashland's John Mullins and another was assessed against Coach Cole when he started to discuss the call with the referee.

The hot-shooting Anderson made good both gratis heaves to make it 67-65 Ashland with 1:04 left and the ball in the possession of Maysville.

The Bulldogs began stalling the time away, working for the good shot that perhaps would set up an overtime. A jump shot with 21 seconds to go rolled off but the Bulldogs grabbed the rebound.

Boone was fouled with 15 seconds showing on the clock but his free throw missed and the rebound went to Ashland. Joe Conley was fouled as the Tomcats ran out the clock and he sank both charity throws after time had expired.

Mike Griffith and Joe Conley each hit on three point shots to put Ashland out in front and the Tomcats never relinquished the lead throughout the quarter as Mullins' driving layup at the buzzer left the score 19-16.

The Tomcats' tight zone defense kept Maysville outside most of the initial period, but the talent Anderson found the range for nine points.

Anderson continued to spearhead the Bulldogs' attack in the second quarter as his eight-footer put the Maysville squad ahead 26-25 with 4:18 left in the first half. After an exchange of buckets, Roger Baldridge popped one through from the right corner and the Tomcats were back in front to stay. The home team led 36-32 at intermission.

Bobby Lynch, who had difficulties in the first half, led the Ashland attack in the third quarter as he shoved in 10 points when the Tomcats rolled to an 11-point lead. But Maysville made a closing surge in the period as they hit eight out of the last 10 points to cut the Tomcats' advantage to 35-50 when the final period got underway.

Anderson took point honors for the evening when the 6-1 Maysville eager connected for 32 tallies. Harry Brooks, who came on in reserve, was the only other Bulldog to double figures with 17.

Lynch and Griffith each tipped the cords for 18 tallies to lead the Ashland attack. Conley and Baldridge each contributed 12 markers.

Both teams sank 25 field goals but Ashland made 43.8 per cent of its shots as they took only 67 from the floor. Maysville fired it up 62 times for a 40.3 shooting clip.

Ashland had 12 turnovers and Maysville 11. The Bulldogs won the battle of the boards 37-34 as Baldridge was high for the Tomcats with 13 grabs.

Ashland (69) — Lynch 18, Conley 12, Mullins 9, Griffith 18, Baldridge 12, Kleykamp, Leebee. PF: 13. FT: 19-25.
Maysville (65) — Anderson 22, Combs, Corde 6, Commodore 3, Thomas 6, Brooks 12, Boone 4. PF: 16. FT: 13-19.

ASHLAND 19 17 19 14—69
MAYSVILLE 14 16 18 12—65

SPORTS

THURSDAY EVENING, FEBRUARY 29, 1966

LEADER ON PAGE THIRTEEN

Ashland Tops Fairview, 103-59;

Lynch Has 27 Points For 'Cats

By MALCOLM CONLEY
Independent Sports Editor

Ashland's Tomcats, defending champions, raced to an 11-0 advantage here last night and went on to take a 103-59 victory over Fairview but outmanned Fairview quintet in the 64th District Tournament.

The Tomcats will now move to Friday night's lower-bracket semifinal contest against a strong Ashland Holy Family squad.

Tonight's varsity action, at approximately 8 p. m., sends Catletsburg against Boyd County with the winner earning a berth in the finals of the district meet and an automatic trip to the Ohio Regional Tournament.

In "B" team tournament action tonight at 6:15 o'clock, the Ashland junior varsity faces Fairview.

The ace guard combination of Bob Lynch and Joe Conley paced the Ashland attack as they combined for a total of 47 points. Lynch moved extremely well to get open shots and finished the evening with 27 markers. Steady-playing Conley came through with 20.

Two other members of the Tomcat squad were in twin-digits as Mike Griffith netted 15 and Ray Kleykamp 14. Ten players scored for the winners.

Jim Cunningham came off the bench to lead the Fairview effort as the 6-2 senior found the range for 16 tallies. Joe Conley was the only other member of the Eagles' quintet to finish in double figures as he posted 12.

Ashland also dominated the statistics as they finished the night with a 48.3 shooting percentage, having hit on 42 of 86 shots from the floor.

Fairview, displaying tournament hitters, turned in an 8-17 first-quarter shooting exhibition as they hit only two of 12 field goal attempts and went on to record a 33.3 per cent shooting mark. The Eagles connected on 20 of 60 shots.

Ashland had a 48-30 edge in rebounding and the Tomcats committed only 11 turnovers while Fairview was guilty of 28 costly miscues.

Combining domination of the boards and a tight man-to-man defense, Ashland took advantage of Fairview's early nervousness and cold shooting to race to an 11-0 lead and finished the initial quarter leading the Eagles 30-7.

This was actually the deciding factor since the Eagles battled the Tomcats gamely the remainder of the distance.

Mike Griffith, Lynch and Conley led Ashland's attack in the second quarter while Cunningham, Conley and Steve Whit countered in fine fashion for the Eagles. The Tomcats managed a 26-19 bounce in the period making to lead 56-26 at intermission. Reserves saw the major share of action for Ashland during the last half of the quarter.

The two teams played on relatively even terms the third quarter although Ashland did have a 22-18 edge in the scoring and entered the fourth canto with a comfortable 78-44 lead.

Ashland's substitutes were in action the closing five minutes of the game with Fairview reserves also concluding the action. Mike Tackett, Greg Sayer, Roger Griffith and Fred Leiber gave Ashland nine straight points at one segment of the stanza. Roger Griffith sent the Tomcats past the century mark for the fourth time this season when he hit a 10-foot turnaround jumper with 30 seconds left. He also accounted for the final two points in the contest on an rebound shot.

District 64		
Ashland (103)	Lynch 27	
Conley 20, M. Griffith 15, Baldridge 8, Kleykamp 14, Mullins, Owens, Leiber 4, R. Griffith 3, Tackett 2, Huff 4, Sayers 2, PF: 20, FT: 19-27		
Fairview (59)	Lester 20, Conley 12, F. Whit 8, S. Whit 8, S. Whit 7, Howard 7, Cunningham 16, Thompson, Hollingsworth, Horsley, Bearman, Carroll, Roark 4, PF: 19, FT: 19-27	
ASHLAND	30 26 22 25-103	
FAIRVIEW	7 19 18 15-59	

Ashland Tops Irish 73-66;

March
1968

'Cats Will Face CHS In Finals

By MALCOLM CONLEY,
Independent Sports Editor

It will be Ashland and Cadetsburg in the finals of the 64th District Tournament tonight at 8 o'clock on the Paul Blazer High School hardwood.

Ashland's Tomcats earned a berth in tonight's championship encounter and the right to join Cadetsburg in a trip to the 16th Regional Tournament next week by squeaking past a determined Ashland Holy Family squad last night.

Cadetsburg, under the first-year direction of Coach Wendell Wheeler, disposed of Boyd County by the same score Thursday night to move the Wildcats into the finals and their first trip to the regional since 1957.

Last night's encounter between Ashland and Holy Family was everything that had been forecast — an exciting, hard-fought contest from beginning to end.

Among the features of the tilt was a scoring battle between the Tomcats' versatile guard Bob Lynch and the Irish's talented John Brislin. Lynch, working well to get his shots from various positions on the floor, posted 25 points as did Brislin, who connected regularly on long ones and dunks.

Both players hit 10 field goals while Brislin converted six of seven shots from the free throw line and Lynch sank six of eight charity tosses.

Joe Conley, picking up his fourth personal foul in the third quarter and leaving by the personal route with 1:44 left in the game, contributed 22 markers to the Ashland attack.

Tom Davis, one of the top college prospects in the area, hit the cords for 19 tallies in the Irish effort while Bob Stump was adding 10.

The initial two stanzas of the contest were relatively even between the two teams. Conley sent Ashland into a 30-lead but Stump's hotter shot the Irish into the lead 20 but again Conley hit the cords and the Tomcats were leading 30-20 at the 10-minute mark.

Although the court was tied twice, the Tomcats were in from 19-18 when the first quarter drew to a close. The defensive work of both teams came into prominence in the opening canto when neither team was able to work its offensive patterns to any great extent of success.

Conley led Ashland's effort in the first period with 12 points while Brislin and Davis carried the brunt of the attack for the Irish.

Both teams found the range for 18 points in the second quarter when the lead changed hands six times and there were five ties. With Lynch hitting for 11 points in the period, Ashland was in front 37-34 at halftime.

Then came the deciding third quarter. Holy Family's shooting cooled considerably and the Irish also were guilty of some costly floor errors. The Tomcats took advantage of this to outscore the Irish 19-12 for a 56-46 advantage.

Ray Kleykamp increased the CHS bulge to 13 when the fourth frame began but Davis, Brislin and Bill McClintock teamed up to give Holy Family nine of the next 12 points and trimmed the margin to seven. Lynch and Conley then gave Ashland the next seven markers for a 69-55 lead and the game was on ice.

Ashland hit 50 percent of its field goals for 73 points while Holy Family was hitting 36 percent of its shots, sinking 24 of 66.

The Tomcats of Coach Harold Cole also had a 50-37 edge in rebounds. Lynch had 14 grabs to give Ashland while Davis equalled his effort for the Irish. Ashland also committed 11 turnovers and the Irish were guilty of only seven.

Ashland (73) — Lynch 25, Conley 22, Griffith 9, Baldrige 6, Kleykamp 4, Mullins 2, Owens, Leibe 2. PF: 23, FT: 19-27.

Holy Family (66) — Davis 19, Brislin 26, Stump 10, Johnson 2, McClintock 7, Curtis 2, Lynch 20. FT: 18-27.

Ashland — 19, 18, 17, 27 — 73
Holy Family — 20, 14, 12, 16 — 66

Ashland, Russell, Olive Hill,

Morgan County District Kings

March 3, 1968

Lynch Tops 'Cats With 26 Points

By MALCOLM CONLEY
Independent Sports Editor

Ashland reeled off 20 straight points to open the second quarter last night and went on to down a never-say-die Catlettsburg quintet 92-50 for the championship in the 64th District Tournament.

The surge at the start of the second quarter erased a closely contested initial stanza as the Tomcats of Coach Harold Cole went on to outpoint the Wildcats 32-9 in the frame and the outcome was decided.

Both Ashland and Catlettsburg will now advance into the 16th Regional Tournament at Morehead this week.

The guard combination of Bob Lynch and Joe Conley again paced the Ashland effort as 10 Tomcats hit the scoring column. Lynch displayed a fine floor game while also leading the Ashland rebounding and ripped the cords for 26 tallies. Conley moved the ball well and finished just behind Lynch with 24 markers.

Pivotman Mike Griffith was the only other member of the Ashland quintet in double figures as he found the range for 10 points.

High-point honors for the evening, however, went to Catlettsburg's versatile performer Roger Zornes. The 6-4 senior center sized the nets for 34 points as he sank 13 field goals and aided eight of nine free throws.

Ashland hit 80 per cent of its shots in the game-splitting stint in the second stanza and finished the evening with 42 of 72 shots from the floor for a 58.3 mean. Catlettsburg had 73 shots but could hit only 21 for a cool 28.7 per cent.

The Tomcats also had a 51-38 edge in rebounding as they committed 21 miscues to 28 for the Ashland.

Having difficulty finding the range and playing rather passively, Ashland found themselves trailing 4-0 on buckets by Zornes and Steve Spears.

Coach Wendell Wheeler's squad still had a four-point edge midway the initial period but Conley, Lynch and Griffith gave the Tomcats six straight points and a 15-11 lead. They were never headed from that point although being in front only 20-18 at the end of the quarter.

Getting some fine board work from Griffith and Roger Baldrige, Ashland exhibited a tight defense and alert ball handling in rating to its 20 straight markers in the second canto. Catlettsburg was unable to score until Spears sank a gratis heave with 2:50 left in the half. The Tomcats were in front 52-27 at intermission.

Conley and Lynch combined for eight straight Ashland points when the third period began and the Tomcats had a 26-17 bugle in the stanza to lead 78-43 when the final eight minutes opened.

Reserves came into action in the last half of the third period for the Tomcats and finished the encounter. Catlettsburg outscored the host team 16-14 in the fourth.

Holy Family, Boyd County and Ashland each placed two players on the eight-player 64th District All-Tournament team. Ashland Holy Family placed John Brishin and Tom Davis on the select squad while Jeff Jones and Burt Frasure represented Boyd County. Ashland players named to the team were Bob Lynch and Joe Conley.

Others making the team were Roger Zornes of Catlettsburg and Jim Cunningham of Fairview.

Holy Family won the sportsmanship trophy while the championship was won by Conley.

Ashland (92) — Lynch 26, Conley 24, M. Griffith 10, Kleykamp 8, Baldrige, Mullins 6, Owens 4, Tackett, R. Griffith 4, Cooksey 2, Huff 2, Salyer 6, PF: 22, FT: 8-17.

Catlettsburg (50) — Jones 1, Zornes 34, Ross 3, Roeker 6, Spears 11, Adkins 1, Lauder 4, Harper, Webb, Christy, Hunt, PF: 15, FT: 16-25.

ASHLAND 20 32 26 15—92
CATLETTSBURG 18 9 17 16—50

March 9, 1968

Ashland Downs Olive Hill 72-50

To Move Into Title Game

Tomcats Tangle With Russell For State Tournament Berth

By MALCOLM CONLEY
Independent Sports Editor

MOOREHEAD — The 16th Regional Tournament has run true to form. Ashland and Russell, pre-tournament favorites, have moved into tonight's 7:30 championship game. Coach Harold Cole's Tomcats gained a berth in the finals by downing a stubborn Olive Hill 72-50 in Friday night's lower bracket semifinal contest. Tonight's encounter will mark the third straight year Ashland and Russell have clashed for the 16th Regional title and a trip to the state tournament. Russell won last year with Ashland taking the crown the year before.

Last night's tilt, naturally, was a happy occasion for the Tomcats. It was also a somewhat sad time for basketball in this region. It marked the finale for Coach Fultz after 17 seasons at the helm of the Olive Hill Comets. And the smaller Olive Hill squad gave their coach an impressive send-off although they were unable to conquer the Tomcats. Playing deliberate basketball, the Comets led Ashland 22-15 at the end of the first quarter and stayed within striking distance until the fourth quarter.

Olive Hill closed out the campaign with a fine 26-6 record and makes Fultz' career mark 385 wins and 191 losses.

The victory sends Ashland into the title fray with a 22-9 slate. Russell will be putting a 24-8 mat on the line this evening. Control of the backboards proved to be the primary difference as Ashland hauled down 44 rebounds

to 16 for the Comets. Roger Baldrige, who fouled out with 2:15 to play, and Ray Kleykamp paced the Tomcats in this department with 13 and 11, respectively.

Both ball clubs shot well during the game. Olive Hill, which hit a cold streak in the fourth stanza, finished the night with a 46.3 shooting percentage while Ashland made good on 50.9 percent of its shots from the floor.

Smooth-operating Bob Lynch was the top scorer for the event, marking as the Tomcat guard pumped in 20 points. Baldrige finished with 15 markers to his credit while Kleykamp was hitting for 12 and Joe Conley, Lynch's run-mate at guard, came through with 11.

Olive Hill managed only two players in the twin-digit category. John Waggoner, who like Ashland's Baldrige and Mike Griffith ran into foul trouble, hit the cords for 18 tallies to top the Comets' effort. John Brown also dropped through 13 points.

Brown sent Olive Hill into the initial lead with a free throw but Kleykamp and Lynch countered with charity throws to give Ashland the advantage. Brown, however, caged another free and Waggoner hit on a 15-footer and again the Comets were out in front.

Baldrige and Griffith efforts returned the Tomcats into the advantage, 7-6, but gratis heaves by Waggoner and Lee Dickson placed Olive Hill back in charge, 9-7, with 3:37 remaining in the opening period.

Play slow, deliberate basketball, Olive Hill retained the lead throughout the quarter, leading 22-18 at the horn.

Ashland scored eight of the first 10 points when the second quarter got underway as they took the lead 26-24 on a 10-footer by Lynch following a steal by John Mullins with 4:29 left in the half. The Tomcats were never headed from that point. They led 33-27 at intermission after having outscored the Comets 17-5 in the second period.

The third canto was also a low-scoring affair with Ashland outpointing the Carter County quintet 14-9 for a 47-36 bulge going into the final eight minutes.

Waggoner and James Duncan gave Olive Hill two quick buckets as the fourth quarter got underway, shaving the difference to seven but then Ashland took command.

With Kleykamp and Baldrige turning in sterling performances in the rebounding department, the two back-line cagers teamed with Lynch to give Ashland 13 of the next 15 points to put the game on ice.

Olive Hill, playing for the good shot, managed to get open on several occasions but the Comets' shooting had blown cold. Ashland had a 25-14 edge in the four period point-making.

Olive Hill (50) — Waggoner 18, Brown 13, Dickson 9, Duncan 8, Taylor, Gee 3, Sartin Johnston, Walker, Tack 1. Bowling PF: 18, FT: 12-18.

Ashland (7) — Lynch 20, Conley 11, Griffith 5, Kleykamp 12, Baldrige 15, Mullins 9, PF: 14, FT: 18-24.

OLIVE HILL 22-5 9-14-50
ASHLAND 19-15 14 21-57

ON THE SIDELINES

with MIKE RELIFORD

★ ★ ★ ★

Lynch and Conley closed out their three-year careers with the 80-75 loss to Russell in the finals of the 16th Region Tournament Saturday night, but both leave tremendous records on the books.

Lynch, who earned a starter's role midway of his sophomore season in 1965-66, finished with 1295 points in 86 games, an average of 15.1 for three years. Lynch was named as one of the better players in Kentucky by two national magazines this year and is recognized as one of the best outside shooters throughout the state.

Conley finished with 1015 points in 73 games, a 13.9 mark. Conley was also one of the best passers and ball hawkers for the Tomcats and led Ashland in assists the past two years.

SPORTS

WEDNESDAY EVENING, DECEMBER 7, 1966

PAGE SEVENTEEN

Ashland Tops Olive Hill 73-52

For 3rd Straight

Lynch Nets 18 To Top Tomcats

OLIVE HILL—Ashland chalked up its third straight decision here last night, turning back Coach Jack Fultz' Comets 73-54, although their performance was below that of their first two outings.

The loosely played contest saw Olive Hill have 21 turnovers while Ashland was credited with 19. Setting the pace for Coach Harold Cole's Tomcats was Tom Lynch, versatile 5-10 junior guard, as he pumped in 18 points. Danny Owens followed with 14 tallies, while John Sieveke was netting 10. Ellis Childers, impressive in a reserve role, also came through with 10 tallies in the winning effort.

For the Comets, high-point honors went to Junior Walker with 13, while Fred Cook was getting 12.

The Tomcats broke on top and were never headed in the contest. They pulled to an 11-3 margin before Walker gave Olive Hill its first bucket on a three-point play with 3:40 remaining in the third canto. Ashland then cashed in 11 straight points to hold a commanding 22-4 bulge.

In the second period, the Ash-

land's turnovers began to make themselves felt. Lee Dickson and Johnny Brown set the pace for Olive Hill in the period as Dickson hit for seven and Brown six.

The early stages of the third frame was a perfect example of how not to play a ball game. Poor errors and cold shooting plagued both clubs until the closing three minutes of the period. Ashland then began to find itself again, moving the ball considerably better to outpoint the Comets 14-2 in the final minutes for a 52-37 bulge when the final period opened.

Brent Henderson, Cook and John Waggoner led the Olive Hill effort as they shaved the difference to 62-47 early in the final stanza but Ashland scored nine straight markers to again put it out of reach.

The Comets scored seven of the last nine points to make the final count as close as it was. Olive Hill had a 17-15 edge in the fourth period scoring.

Ashland, which hit 52 per cent of its shots from the field despite some cold segments, had 39 field goals to 18 for the home team.

Olive Hill's turnover total of 21 and 22 of 38 free throws while the Tomcats were sinking 15 of 22 tosses from the gratis circle.

Ashland's next outing will be away when they play hosts to Smooth.

Ashland (72) — Lynch 18, Owens 15, Sieveke 10, Conley 9, Childers 10, Johnson 4, Waggoner 6, M. Griffith 2, FT: 27-25.
Olive Hill (54) — Cook 12, Dickson 9, Duncan 2, Waggoner 4, Henderson 8, Walker 13, Brown 4, PR: 19, FT: 22-34.
ASHLAND 22 12 24 73-52
OLIVE HILL 8 19 16 15 52

Junior Year
1966-1967
Basketball

Ashland Blasts Boyd County 110-45 For 2nd Win; Lynch Hits For 25

By MALCOLM CONLEY
Independent Sports Editor

An aggressive defense, team effort and lots of hustle were the key factors last night as the Ashland Tomcats made their home debut a successful one, polishing off Boyd County with surprising ease, 110-45.

The Tomcats consistently forced the Lions to commit mistakes which the Ashland players converted into buckets as the charges of Coach Harold Cole picked up their second straight victory. Moving the ball well throughout the contest, Ashland worked as a unit before the near-capacity crowd. This team effort resulted

in 13 players entering the scoring column. Bob Lynch exhibited an extremely hot shooting effort as he pumped in 11 of 16 shots from the field and hit three free throws without a miss to lead the Tomcat scoring parade with 25 markers.

While playing an important role in the AHS rebound work, Joe Conley, Lynch's running mate at guard, also contributed 17 points to the winning effort. The stingy Tomcat defense kept Boyd County from placing a man in double figures. Kenny Darling, in a reserve role, was high for the Lions as he tallied nine points in the fourth quarter. Jim Young and Phil Dowdy each came through with seven.

The Tomcats, who had only eight turnovers in the contest, finished the evening by hitting a fine 57 per cent of their shots from the field.

Domination of the boards also belonged to the smaller Ashland squad as they handed in 27 defensive rebounds and 18 grabs on the offensive board. John Sieweke led this department for the Cats with eight while Wayne Workman was getting seven. Owens six and Ellis Childers six. Joe Conley dropped in a bucket just after the opening tip-off and Ashland was never headed in the contest.

Coming to a 10-4 advantage, Ashland saw Eddie Kress and Jim Young narrow the gap to 10-8 before Lynch, Sieweke and Owens gave Ashland five quick points. Following a tip by Phil Dowdy, Sieweke sank a charity toss and Lynch popped in a pair of 15-footers to make it 20-10 Ashland when the first period came to a close.

Using their sticky defense to good advantage, Ashland out-pointed the visiting Lions 24-10 in the second period for a 44-20 huge lead at the halftime break.

Mike Griffith, Owens and Childers teamed up for four quick Ashland buckets when the quarter got underway and the fast-moving Tomcats remained in charge throughout the period. Childers and Owens each pumped in eight points in the stanza.

The third quarter proved to be the real back-breaker. With Sieweke, Owens and Workman clearing the boards repeatedly, Ashland's fine defense forced the Lions to make repeated floor errors. When the firing had ceased in the canto Ashland had outscored the visitors 36-15.

Sharpshooting Lynch led the way in the frame as he hit for seven field goals while Owens was adding nine points, Keith Johnson six, Conley four and Sieweke three. Eddie Kress picked up Boyd County's only field goal with 4:07 to play in the period.

With reserves playing most of the final frame for both teams, Ashland had a 30-19 advantage in the scoring. Workman's rebounding performance at the center position was the first time

Boyd County (45) —	Young 7, Kress 5, Dixon 5, Easterling 6, Dowdy 7, Darling 9, Wellman, Jackson, Newman 5, Eidson, Lester, Rigsby 1. PF: 11. FT: 19-23.
Ashland (110) —	Lynch 25, Conley 17, Owens 19, Sieweke 8, Workman 8, Childers 9, M. Griffith 4, Radunas 4, Hayes 2, R. Griffith 4, Johnson 8, Franklin 1, Huff, Morman, Salyers, Huff, PF: 22. FT: 12-17.
BOYD CO.	19 19 10 16 39 — 45
ASHLAND	20 24 35 30 — 110

2040 Regency R
859-277
300-240-1170
L
777-0136 1-4
d., Suite R

SPORTS

WEDNESDAY EVENING JANUARY 18, 1967 PAGE SEVENTEEN

Ashland Downs Paintsville

74-51 For 9th Win

Lynch Has 19 To Top Tomcats

PAINTSVILLE — Ashland's Tomcats, who have retained their seventh place position among the state's cage pros, chalked up their ninth victory of the season here last night. The 74-51 decision came over Paintsville's Tigers.

After a closely contested first period, Ashland began to pull away in the second quarter and steadily increased their margin to leave the game with a 19-3 record. Paintsville's season mark slipped to 6-8.

Ashland placed four players in double figures with guard Bob Lynch setting the pace. The versatile cager hit the cords for 19 points and also led the Tomcats' 12 rebound effort by accounting for 11 grabs.

John Steweke labored dependably on the boards for the Tomcats and finished the evening with 14 points to his credit while Mike (Bozo) Griffith came off the bench to pitch in 13 tallies. Danny Owens also came through with 12 markers.

Game honors for the evening went to Paintsville's sharp-shooting senior forward Harold Taylor who connected for 25 points. Only other member of the Tigers' squad in twin digits was pivotman Jim Bruh with 18.

The Tomcats were never headed in the fracas after John Steweke's bucket following the opening tip-off sent them into a quick lead. A see-saw battle then ensued with the lead being tied four times before the Cats put together five straight points for

a 13-8 advantage. At the end of the first quarter, after Bruh and Owens had traded buckets, Harold Taylor dropped one through for the Tigers just before the horn to leave the Tomcats in front 18-12 at the end of the quarter.

Paintsville whittled away at the difference to knot the count at 17-17 when the second frame got underway but the Tomcats, led by Lynch, scored 14 of the next 16 points for a 12-point bulge.

A turn-around jump shot by Ashland's Mike Griffith dropped through in the closing seconds of the quarter and the Tomcats led 38-22 at halftime.

Outscoring the home team 20-14 in the third frame, Ashland led by 17 points on seven occasions in the quarter before Lynch's goal tipped the margin to 13-55-36 after three quarters had gone by the boards.

With reserves seeing a major share of the action in the fourth quarter, the Tomcats continued to maintain the advantage, outscoring the Tigers 19-15.

The difference again stood at 17 before Wayne Workman, Griffith, Larry Gartrell and Joe Conley contributed two point efforts to give Ashland a 25-point bulge. Harold Taylor's bucket for Paintsville then ended the scoring.

Ashland will return home for a Friday night encounter with Ina while Paintsville will be entertaining Pikeville that same evening.

Ashland (75) — Owens 12, Johnson 2, Workman 4, M. Griffith 13, Steweke 14, Lynch 19, Conley 3, Childers 3, Gartrell 2, Tackitt, Leabee, Hays, Salyer. PF: 18-27.
Paintsville (51) — H. Taylor 25, Ferguson 18, Robinson 1, Williams 6, Taylor 4, Cox, Lewis. PF: 17. FT: 13-22.
ASHLAND 15 20 20 19—74
PAINTSVILLE 12 10 14 15—51

Hoopin' It Up

Lynch, Conley Sparkle For No. 1 Ashland; Russell's Average 111

By **BOB WHITE**
Courier-Journal and Times Staff Writer

By Harold Cole's own admission, his Ashland High basketball team doesn't have much height or experience.

And he was "delighted but surprised" yesterday to discover his Tomcats are No. 1 in The Courier-Journal's Litkenhous Ratings, particularly since this is regarded as a rebuilding year for Ashland.

Yet, coach Cole has liked what he has seen of his Tomcats in their first four games—in which they have beaten Calflettsburg, 92-52; Boyd County, 110-45; Olive Hill, 73-48.

"We've got good shooters and good ball-handlers," Cole said. "We don't have to depend on one player. The boys work well together."

With 16th Region rival Russell rated No. 5, Ashland isn't a shoo-in for a return trip to the State Tournament.

Back from last season's state Tournament quarter-finalists is one starter, Lynch. He's averaging 20 points a game, along with Joe Conley, gives Ashland a dandy pair of junior guards.

Conley, a brother to ex-Ashland Kentucky star Larry Conley, "is an excellent ball-handler who has developed into a scoring threat (12 points a game) and is a tremendous passer like Larry," Cole said.

Danny Owens and John Sieweke, who are averaging 15 and 11 points, respectively, are two other Ashland starters. Four players share the fifth starting spot—Wayne Workman, Ellis Childers, Mike Griffith and Keith Johnson.

"That keeps them hustling," Cole said.

The Ashland roster:

FORWARDS				
Player	Ht.	Wt.	Class	Age
Danny Owens	6-2	170	Sr.	17
Wayne Workman	6-2	170	Sr.	17
Keith Johnson	6-2	170	Sr.	17
CENTERS				
Player	Ht.	Wt.	Class	Age
Mike Griffith	6-10	185	Jr.	16
John Sieweke	6-4	170	Jr.	16
Ellis Childers	6-3	180	Sr.	17
GUARDS				
Player	Ht.	Wt.	Class	Age
Bob Lynch	5-11	155	Jr.	16
Joe Conley	5-10	155	Sr.	17
Wayne Workman	6-0	165	Sr.	17
John Radianis	5-10	155	Jr.	16

The state's best tournaments, prior to district eliminations, appear to be the Ashland Invitational (Dec. 26-30) and the Louisville Invitational (Jan. 19-23).

The AIT, in which Atherton will present Louisville's semifinals, will feature the No. 10 team, besides Ashland

and Russell, there are No. 9 Covington Catholic and No. 10 Lexington, Bates Creek, plus Mid-State Conference Tournament champion Clark County and unbeaten Breathitt County.

"College coaches tell me Covington Catholic is real tough," said Cole of the team which also will be in the LIT along with six other teams ranked in the top 20. The 16-team LIT includes No. 2 Central, No. 8 Allen County, No. 12 Male, No. 15 Owensboro, No. 18 Shelby County and St. Xavier, tied for 19th.

The LIT still must pick three more out-of-town teams to complete its field.

The state's highest scoring team? Undoubtedly, it's Russell, which has tallied over 100 points in each of its four starts, including a 133-66 rout of Louisa. "Russell is big and fast, has good depth and is pouring in the points," commented Cole.

The Red Devils, led by 6-foot-8 junior Tom Roberts, are averaging 111.5 points a game, compared to their opponents' 61.5. If Ashland and Russell don't meet in the AIT, they'll play Jan. 24 at Russell.



Harold Cole

SPORTS

JANUARY 21, 1967 PAGE FIVE

Tomcats Win 94-78 Over Inez

Lynch's 25 Sets Pace For AHS

By MALCOLM CONLYE
Independent Sports Editor

Ashland ran its season record to 10-3 last night as four starters finished in double figures to give the Tomcats a 94-78 win over Inez.

Coach Harold Cole's charges will return to action tonight when they take on the Wheelwright Trojans (12-7) in the mountain community.

Bob Lynch, 5-11 junior guard, again set the pace for the Tomcats as he ripped the cords for 25 points and also led the rebounding work.

John Sieweke followed Lynch in the point-producing department by connecting for 18. Danny Owens contributed 15 to the winning effort while Ellis Childers was netting 10 and finished as the number two man in the rebounding category for the 'Cats.

Inez's young ball club also had four players in twin digits. Odell Pack, versatile 6-3 senior pivot man, matched Lynch's effort by hitting for 25 while Gary Meade, 6-2 freshman forward, teamed with Pack on the rebound and contributed 22 total points.

Jim Whitt, 6-0 senior guard, added 11 for the Indians while Jack Whitt, senior guard, came through with 10 passers.

The outcome was decided in the first half when Ashland staged a surge midway the initial quarter to pull to a 22-13 lead after the first eight minutes had elapsed.

Ashland also had a 24-19 advantage in the second canto scoring to lead 46-32 at intermission. Displaying a torrid shooting performance, Inez outpointed the home team in the third to cut the difference to 69-57. The Tomcats then regained complete command by outscoring the Indians 26-21 in the closing segment.

Meade's lone-ender from the corner gave Inez the opening lead by a pair of charity throws. Sieweke evened the count and Coach Cole's runner put the Tomcats into the lead and they were never in jeopardy.

The Indians' zone defense troubled the Tomcats momentarily but the Ashlanders solved it and their own defense gained an advantage in scoring by hitting seven straight points during the opening frame for the nine point bulge at the end of the first quarter. Owens' bucket just before the buzzer made it 22-13.

Sieweke, Lynch and Joe Conley spurred the Tomcats to a 30-15 lead but Inez, playing methodically, scored 10 of the next 12 points and the difference was back to five. A duo of free throws by Childers, who turned in sharp passing for the 'Cats, and a goal by Owens at the close of the period left Ashland in front 46-32 at the break.

On three occasions Ashland upped its advantage to 26 in the third frame but the never-say-die Indians connected on 11 of their 19 shots from the floor to shave the bulge to 68-57 at the end of the frame.

Meade, Pack and reserve J. B. Parsons led an Inez surge that trimmed the score to 72-67 early in the fourth canto but Childers, Sieweke, Lynch, Conley and Owens all figured in a Tomcat effort that boosted the AHS lead back to 12.

Jim Whitt's rebounder and a free throw by Parsons cut it to 87-73 but Mike Griffith tossed one in from underneath, Wayne Workman connected on a sharp pass from Greg Salyers, Tim Huff sank a free throw and Griffith rebounded one through to close the game.

Inez hit 62 per cent of its shots for the evening, making good on 32 of 52 attempts from the floor. Ashland hit 36 of 66 shots for just under 55 per cent.

Coach Bill Meade said the "B" team from the City of Ashland victory over Inez was a "disappointing" loss for the city.

"I was disappointed because we were 24-19 in the first half and we were 46-32 at the end of the first half. We were 69-57 at the end of the third quarter and we were 94-78 at the end of the game. We were in a position to win the game and we lost it. We were in a position to win the game and we lost it. We were in a position to win the game and we lost it."

Ashland (94) — Owens 15, Sieweke 18, Lynch 25, Childers 10, Conley 9, Workman 8, Griffith 8, Johnson, Huff 1, Salyers. PF: 17. FT: 22-27.
Inez (78) — Meade 22, Parsons 5, Jim Whitt 11, Pack 25, Endicott 5, Jack Whitt 10. PF: 18. FT: 14-23.
ASHLAND 22 24 22 26—94
INEZ 13 19 25 21—78

SPORTS

WEDNESDAY EVENING, JANUARY 25, 1967

Ashland Takes 74-66 Decision Over Russell

Lynch Sets Pace With 25 Points

By MALCOLM CONLEY
Independent Sports Editor

The big game is over. Final score: Ashland 74, Russell 66. Probably the most awaited regular season game in the history of area basketball was staged before a capacity throng in the Russell gymnasium last night and when firing had subsided each quintet possessed an 11-4 record for the season.

The game was everything that had been anticipated. A typical Ashland-Russell cage encounter, it was a closely-contested, hard-fought affair with the widest separation between the two clubs being 10 points.

It was a tremendous team effort with lots of hustle and what we knew we had to have," a happy Harold Cole said concerning the performance of his Tomcats. The Ashland mentor also praised the Russell squad of Coach Marvin Meredith, calling them "a real fine team . . . they are a well-drilled club and performed in that manner."

Likewise, Meredith lauded both the Ashland squad and the showing made by his ball club. "They've got a good team and shot real well," the Russell mentor said, hastening to add that he felt his boys did a nice job.

"We faltered in a couple of spots but our kids played hard . . . it was a real good game," he said. Meredith also said he felt the turnovers the Red Devils had, many at key times, caused his club to actually "beat ourselves."

Although it was a team effort that pulled the Tomcats to victory, members of the Ashland generation drew attention to several performances.

Dependable Bobby Lynch took charge of the Cats' effort in the second half, spearheading the thrust with 20 points in the last two stanzas to finish the evening with 25 tallies. Wayne Workman came off the bench to give the Tomcats a needed shot in the arm when he scored the last bucket in the third frame for the victors and accounted for the first five AHS markers in the fourth frame. Workman finished the evening with 11 tallies for the Tomcats and his effort was matched by John Sieweke and Joe Conley.

Russell also showed balanced scoring with Roger Vanover being the top point-producer with 16. Tom Roberts, who led the evening's rebound work wound up with 14 markers as did Steve Radcliff before fouling out with 4:35 to play. Tookie Helton also flipped in 10 points.

The outcome was decided at the free throw line when Russell hit 28 field goals to 27 by the Tomcats. Ashland, however, connected on 20 of 29 free throws while Russell hit 10 of its 15 opportunities from the gratis circle.

The Tomcats also wound up with a 29-28 edge in the rebounding department. Sieweke was the leader for Ashland in this category with eight catoms to his credit as Lynch had seven and Ellis Childers five. Roberts paced the evening's effort in grabs when he hauled in 13 for the Red Devils.

Radcliff, Roberts and Helton shot Russell into a quick 8-2 advantage as the rebounding of Roberts played a vital role in the Red Devils' opening surge. Ashland had shaved the difference to four going into the final two minutes of the initial half but Mike Fannin's closing bucket sent Russell to 19-14.

Vanover, Roberts and Radcliff led a Red Devil surge that gave the home team the longest lead of the evening, 29-19, early in the second frame. But then Lynch came through with three points, Joe Conley four, Workman two and Russell led by only one marker.

Russell upped its advantage to five again but Ashland scored the closing six points in the quarter to send the Tomcats to the dressing room with a 40-39 lead, their first of the game.

Roberts, Fannin and Radcliff offset buckets by Lynch and Sieweke to give Russell a 45-44 lead with just over two minutes having elapsed in the third quarter but Lynch pumped in a 15-footer and then hit a layup following Danny Owens' crisp shot and the Tomcats were in front 50-45. They were never headed from that point, leading 57-52 at the end of the third frame.

Ashland's lead went to as much as seven in the closing segment with a rebound shot by Lanny Miller making the rebound 71-66 with 46 seconds to play. Lynch, Sieweke and Childers all accounted for key rebounds in the closing seconds while a free throw by Lynch and a duo of charity throws by Sieweke accounted for the final margin.

Ashland (74) — Owens 9, Workman 11, Sieweke 11, Lynch 25, Conley 11, Childers 7. PF: 22. FT: 20-29.

Russell (66) — Fannin 4, Helton 10, Miller 8, Roberts 14, Radcliffe 14, Vanover 16, Young 18. FT: 10-15.

ASHLAND
RUSSELL

The Herald-Dispatch

Wed. Jan. 25, 1967 11

Ashland Clips

Red Devils

Tomcats Maintain 'Cool,' Win 74-66

By TIM KELLY

Herald-Dispatch Sports Writer

RUSSELL, Ky. — The Ashland Tomcats may have learned the value of defeat Tuesday night.

The Tomcats, who have been beaten three times by one point, didn't lose their cool against Russell Tuesday and, consequently, went back to Ashland with a 74-66 victory that left Ashland coach Harold Cole "ticked to death".

Russell, which has never been defeated by less than eight points or won by fewer than 32, fell prey to its own mistakes, thereby prompting Red Devil Coach Marvin Meredith to say, "we beat ourselves."

The more than 3,000 people who jammed into a steamy 2,600-seat Russell Gym were treated to a blazing second-half performance by the coolest of all the Tomcats, junior guard Botmy Lynch.

Lynch, who scored only two field goals and a free throw the first half, sank the first basket of the second half and could hardly be stopped afterwards.

The 5-10 junior, only Ashland starter back from last season, zeroed in on the bucket for seven field goals and six of ten free throws in the second half to finish with a game-high total of 24 points.

Next best for the Tomcats were guard Joe Conley, center John Sieweke and sub Wayne Workman, who scored 11 points apiece.

Top Red Devil was forward Roger Vanover, who bucketed 16. Steve Redcliff and center Tom Roberts followed Vanover with 14 each. Guard "Tookie" Helton got five field goals for 10 points.

Sieweke, with eight, led Ashland's rebounders to a slim 29-28 margin on the boards. Roberts grabbed 13, best for the Red Devils.

Ashland also out-hit the Devils from both the floor and the free throw line. The Tomcats banged in 28 of 52 from the field for 53.7 per cent. The Devils also made 28, but shot 56 times for a highly respectable 50 per cent.

The difference came at the free throw line, where Ashland got 26 chances and made good on 18. Russell had 15 attempts, capitalizing on ten.

The Red Devils rushed out to a five-point (19-14) lead in the first period after going on top by as many as nine. Russell still held a five-point cushion with 2 1/2 minutes left in the second quarter, but a jumper by Conley and four free throws by Ellis Childers and Dan Owens gave Ashland its first lead of the game 40-39 at halftime.

Russell stayed close to the Tomcats until there were about five minutes left in the third period, when Ashland blew out to a 50-45 advantage after Russell had led, 45-44.

The Devils never could recover from that Ashland spur. Late Russell turnovers nipped any chance of a rally. The Tomcats were content to let Lynch shoot from the outside early in the fourth period and were more than willing to draw desperation fouls by Russell in the final minutes.

The outcome left both teams with 11-4 records. Russell faces one of Ashland's conquerors, Ashland Holy Family, Thursday night. That one is expected to fill the Red Devil gym again.

ASHLAND			RUSSELL			
G	F	T	G	F	T	
Lynch	9	6-10	24	Helton	5	10
Conley	5	1-2	11	Vanover	6	20
Sieweke	3	5-4	11	Roberts	6	10
Owens	3	3-3	9	Pannin	2	10
Childers	3	2-3	8	Redcliff	6	22
Workman	3	1-2	11	Miller	3	12
				Young	0	0
Tot.	28	18-24	74	Tot.	28	52
Ashland				Russell		
Total fouls	Ashland			Russell		
Fouled out	Ashland			Russell		
Officials	Johnson, Sand, Newman					
Attendance	3,200 (Estimated)					

Ashland Downs Maysville 80-73

SPORTS

WEDNESDAY EVENING, FEBRUARY 1, 1934 PAGE SEVENTEEN

Lynch Has 23; Win Is 13th

MAYSVILLE.—Four players finished in double figures for the Tomcats here last night in leading the Ashland squad to an 80-73 victory over the Maysville Bulldogs.

The victory was the third straight and 13th of the season for Coach Harold Cole's charges, who have dropped four decisions. Last night's setback leaves Maysville with a 10-9 slate.

Junior guard Bob Lynch again led the scoring effort for the Tomcats, displaying a fine floor game and soft shooting touch to hit the cords for 23 tallies.

Lynch's running mate out front, Joe Conley, displayed pinpoint passing and was second in the scoring parade with 18, getting 14 of his tallies in the first half. Ellis Childers worked diligently on the boards for the 'Cats and posted 17 points while Danny Owens was showing through 13.

Maysville also had four starters in double figures with Charles Corde setting the pace at 20. Bob Anderson contributed 17, Bob Case 16 and John Combs 10.

The encounter was closely contested throughout although Ashland led all the way with the exception of one brief time early in the initial period.

Conley and Lynch fired the Tomcats into a quick 4-0 lead but Anderson hit a pair of buckets and Corde's goal then left Maysville with a 6-4 bulge.

Wayne Workman tied it with a jump shot and Owens returned the Tomcats to the lead with his field goal. Workman added a pair of charity throws and Lynch a turn-around jump shot and Ashland had a quick 12-6 margin never to be headed.

With Anderson leading the way (he scored 12 points in the quarter) Maysville managed to tie it up before Childers dropped in a lay-up to make it 22-20. Ashland at the end of the first period.

Coach Cole made a defensive shift in the second quarter, putting Owens on the talented Anderson and he was limited to one point as Ashland surged to a 43-36 edge at halftime.

Corde opened the second frame with a free throw for Maysville but Lynch, Conley and Childers hit consecutive goals to give the Tomcats a seven-point lead. Ashland maintained that margin at the mission although the determined Bulldogs could get up to two on three occasions.

Tomcats' rebounding was the key in the second half. Lynch leading the way with 23, outscored the Bulldogs 17 for a 66-53 lead at the end of the third quarter.

Combs hit a gratis heave for Maysville to open the final period but a tip by Owens gave Ashland its longest lead of the game at 67-54.

The Tomcats retained their 12-point margin until Corde's pair of dunks cut it to 78-68 with 2:30 to play. Lynch then sank a charity throw to end Ashland's scoring with 2:18 showing on the clock.

A free throw by Corde answered by Bill Commodore and a pair of foul shots by Bob Vincent concluded the point-making.

In the preliminary game, Coach Bill Fultz' Ashland '33 team squad was dealt its first setback of the season, 60-34, after the Little Tomcats had won 12 straight games. Mike Tackett was high for Ashland with 12.

Ashland (80)—Owens 13, Workman 4, M. Griffith, Sieweke 2, Lynch 23, Conley 18, Childers 17. P.F. 13. B.T. 16-24.

Maysville (73)—Anderson 17, Vincent 2, Corde 20, Combs 10, Case 16, Rash 2, Commodore 2, Samuel 4. P.F. 15. B.T. 19-25.

ASHLAND 80-73 MAYSVILLE

ASHLAND DAILY INDEPENDENT
Sports



AHS Takes Fifth Straight Win, 87-59

PARIS. — Ashland's Tomcats are faring well away from home. Coach Harold Cole's charges jumped to a quick lead here last night and were never behind in downing Bourbon County, 87-59. It was the third straight road victory for the Tomcats, extending their current win streak to five. The decision leaves them with a 15-4 slate while Bourbon County's season mark skidded to 6-12.

Ashland was impressive in taking the win. They displayed line team effort and dominated the rebounding as key factors. The Tomcats also hit 32 of 68 shots for 47 per cent.

Again, balanced scoring was featured with four players

ishing in double figures. Leading the way was guard Bobby Lynch when he hit the boards for 29 tallies, his high as a varsity player.

Danny Owens regained his offensive form to drop through 19 tallies while John Sieweke worked well on the boards and contributed 14. Joe Conley also came through with 13 markers.

Denny Swartz with 14 and Ricky Pridemore at 12 were the only members of the Bourbon County squad in twin digits.

With Ashland's tight defense forcing the Colonels to commit turnovers, the Tomcats pulled to a quick 6-0 bulge with Lynch getting three buckets.

When Conley popped in so free

throw with 32 seconds to go in the opening period, Ashland still had the six-point edge but Pridemore hit a bucket and Tom Gabler a charity throw to leave the count 19-16 when the period drew to a close.

Lynch scored on a fielder and Allen Harney a duo of charity throws as the second canto got underway. Then Ashland pumped in 10 straight for a commanding 31-18 advantage.

Bourbon County hit for the next six tallies but the Tomcats' hit 12 of the last 17 points in the frame, Lynch's 25-footer at the buzzer sending them to the dressing room with a 43-39 lead at halftime.

The Tomcats came out primed

when the third frame opened, netting the first seven points and a 50-29 margin. The Colonels had managed to narrow the gap to 17 but Ashland struck for five in a row.

The two teams traded shots the rest of the way and John Sieweke's foul shots left Ashland in front 66-43 when the final segment got underway.

Owens had nine points and Lynch eight to lead Ashland's 21 point production in the fourth quarter while Bourbon County was being limited to 16. Reserves played the last half of the stanza for the Tomcats.

Owens and Childers led the 54 rebound production for Ashland as Owens hauled in 16 and Childers 10.

Ashland will again be on the road Tuesday when they play Lexington Lafayette. They return home Saturday night for another counter with Hazard.

Ashland (87) — Owens 17, Sieweke 14, Lynch 29, Conley 13, Childers 1, Johnson 2, Workman 7, Salyers 2, Gartrell, Franklin, Tackett, M. Griffith. PF: 16. FT: 23-29.

Bourbon Co. (59) — Gaebler 4, Southworth 7, Harney 6, Pridemore 12, Swartz 14, Rainey 2, George 5, Williams 6, Belding 3, Cason, Earlywine, Wagner, McClain. PF: 18. FT: 13-21.

ASHLAND 1912-1913 21-57
 BOURBON CO. 16-13-14-16-53



ASHLAND DAILY TRIBUNE, WEDNESDAY, FEBRUARY 10, 1967

Ashland Wins 65-59 Over Lafayette

Cats Host To Hazard Tonight

LEXINGTON — Ashland's Tomcats fought off a gallant group of Generals here last night in disposing of Lafayette, 65-59. It was the sixth straight decision for Coach Harold Cole's charges who are now 16-4 for the year.

The Tomcats will lose no time in returning to action as they face one of their most stern tests of the campaign tonight when they play host to powerful Hazard. The game is set for 8 p.m. on the PBHS hardwood with a preliminary till getting underway at 7:30.

Leading the efforts for the Hazard squad is Jim Rose, 6-3 senior. He is one of the most outstanding players in the state. Another fine member of the Bulldogs' lineup is Dawn Baker, a senior who is a fine ball handler and shooter.

Rose paced Hazard to a come-from-behind victory over Carr Creek last night. The 6-3 senior scored 23 points to pull the Bulldogs from a 37-33 halftime deficit to a 57-45 win.

"They've got a real fine basketball team and they are always anxious to play Ashland. It will take an all-out effort in the basketball department if we are to win," Coach Cole said of the perennial contenders to the state tournament. Ashland's victory over Lafayette last night was far from an easy task. The inspired General outlined the Tomcats by only one point, 60-59, with 1:02 left in the game.

John Sieweke then converted a three-point play with 39 seconds to go and Bobby Lynch added a duo of charity tosses to close the scoring.

Ashland broke on top on the strength of Lynch's layup but Buck Derrickson and Greg Austin gave Lafayette a 4-2 margin. A three-point effort by Ellis Childers returned Ashland into command and the Tomcats were in front 11-10 at the end of the first

With the customary hustle of the Cats and steady backing, the Tomcats took the upper hand in the second canto. They scored nine of eleven points at one point to gain a 26-26 deadlock with 1:28 left.

Childers and Lynch teamed for five AHS tallies before Mike Livisay's bucket left the halftime score at 31-28 Ashland.

The Generals kept plugging away at the Tomcat bulge in the third quarter. The lead changed hands four times in the period with Ashland pulling in front 42-41 on Sieweke's bucket and the Tomcats were never headed.

The Workman, Mike Griffin and Lynch hit Ashland ahead 49-47 at the end of the quarter. Lafayette got within 50-49 of the lead early in the last quarter but Childers hit four consecutive free throws to up the margin to 60-51. Livisay pushed one through and Gary Waddell made good on a three-point try to narrow the gap to one. Then Sieweke and Lynch hit for Ashland to insure the victory.

Lynch led the point-making for Ashland with 17 tallies while Sieweke was netting 13 and Childers 10. Childers was the leading rebounder with 11 grabs to his credit. Austin, Livisay and Waddell each hit for 15 for the Generals, who are now 11-9 on the season.

Ashland (45) — Lynch 17, Owens 6, Childers 10, Conley 8, Sieweke 13, Workman 4, Griffin 4. PF: 13; FT: 21-28.

Lafayette (59) — Austin 15, Derrickson 5, Berry 3, Livisay 11, Washington, Waddell 15, Jeter 6, Perkins. PF: 19. FT: 17-27.

SPORTS

FEBRUARY 18, 1967

PAGE FIVE

Ashland Wins 19th, 83-70

Victory 200th For Coach Cole

By MALCOLM CONLEY
Independent Sports Editor

Bobby Lynch bombed the nets for 31 points as all five Ashland starters finished in double figures to give the Tomcats an 83-70 decision over Breathitt County here last night.

The win also marked two levels of achievement. For Coach Harold Cole it was the 200th victory of his coaching career and gave this year's Tomcats one more win than that scored in regular season competition by last season's 18th Regional championship squad.

Having now won nine straight, Ashland possesses a 19-4 slate compared to the 18-6 mark last year's team took into tournament play. The Tomcats still have one regular season encounter left as they will host Woodford County Friday night.

Breathitt County's setback was only their fourth with the 14th ranked 14th Region squad having won 25 tilts.

Following the performance by Lynch, who had 11 field goals and nine of 13 free throws, was a balanced effort on the part of the other Tomcat starters.

Joe Conley pumped in 14 tallies from the other guard position with John Sieweke and Ellis Childers each netting 12. Danny Owens also contributed 10 points with Wayne Workman's four markers rounding out the Tomcat scoring.

Lynch's 31-point effort was equalled by Breathitt County's Larry Noble as the 6-4 forward teamed with the popular B. G. Lovins to account for all but 12 of the Bobcats' points. Lovins hit the nets for 27.

Fred Combs and Goley Salyers each had six tallies to complete the effort by Coach Fairce Woods' quintet.

The Tomcats built up a 13-point bulge in the first half, the same margin by which they won. Breathitt County made a definite closing surge to almost break the Ashland lead.

Noble and Lovins led an onslaught that carried the Bobcats within five of the Tomcats at the close of the third stanza and they trailed the home squad by only one point, 67-66, with 3:53 remaining.

Ashland, however, retained its poise and displayed the rallying technique indicative of a good ball club to score 16 of the closing 20 points for the 13-point victory.

Lynch hit following the opening tip-off, and the 'Cats were never headed. With the sticky Ashland defense keeping Breathitt County from getting the shots early in the game and forcing the Bobcats to make repeated turnovers, the Tomcats surged to a 15-4 advantage.

Breathitt narrowed the gap to five points but Sieweke's bucket on a perfectly executed pass from Childers left the score at 29-22 when the first period drew to a close.

With Lovins getting nine of the Bobcats' first 10 points in the second quarter, Breathitt shaved Ashland's lead to five but the Tomcats used a 20-footer by Lynch, a short jumper by Workman after a fine save by Conley, and a jumper by Childers to gain regain command. Conley layup made the count 43-30 at intermission.

Ashland took charge in the opening minutes of the third frame and had increased their lead to 17 before Breathitt County began to come to life. Lovins and Noble combined to score 13 of the next 15 points and the difference was back to six. Owens then sank a charity throw for the Tomcats and Salyers retaliated with a 10-foot jumper for a 65-57 score when the final canto got underway.

The scoreboard showed the Tomcats still in front by five with 4:33 remaining to play in the third but Combs hit a one-handed shot from the corner and Lovins topped in a 10-footer to build a 71-57 margin with 3:45 left. Lovins and Noble then closed out the game.

Ashland finished the evening with a 67 per cent shooting average, netting 34 of 60 shots. Breathitt County connected on 29 of 57 shots from the field and a 51 per cent mean. The Tomcats had 30 rebounds with Childers leading in this department on 10 cartons.

Ashland's "B" team of Coach Bill Fultz edged a junior high school All-Star team, under the direction of Coach Steve Gilmore, 57-48. Tim Huff paced the Little Tomcats with 18 while Fred Seibee was netting 14. John Mullins, Joe Mantle and Curt Daniels each tallied 14 for the Junior High Stars.

Breathitt County (70) — Lovins 27, Noble 31, Combs 6, Salyers 6, Cundiff, Morris. PF: 15. FT: 12-25.

Ashland (83) — Owens 10, Sieweke 12, Childers 12, Lynch 31, Conley 14, Workman 4, Johnson. PF: 19. FT: 15-23.

BREATHITT 12 18 24 14-27
ASHLAND 20 23 16 24-83

SPORTS

SPORTS RING, MARCH 5, 1967

PAGE SEVENTEEN

AHS Win

'Cats Win Over Irish 84 To 57

By MALCOLM CONLEY
Independent Sports Editor

Ashland again is the 64th District champion!

The Tomcats made a surge in the second quarter and went on to turn back Ashland Holy Family, 84-57, in the championship game on the Paul Blazer High School hardwood last night.

Both Coach Harold Cole's charges and the Irish of first-year mentor Bill Carroll will advance into the 16th Regional Tournament here this week.

For Ashland the victory averaged one of the four losses on their 26-game card. The Irish, who enter the regional with a 24-8 slate, bettered the Tomcats 68-63 in the Ashland Invitational Tournament.

Again getting balanced scoring, the Tomcats placed four players in double figures.

Bobby Lynch, versatile guard, was the propelling force with 27 points on 11 field goals and five of six charity throws. Joe Conley, Lynch's running mate out front, added 17 tallies while Danny Owens, who led Ashland's rebounding, and Ellis Childers each came through with 11.

Tom Davis, smooth-moving 6-4 pivotman, was high for Holy Family. He hit the cords for 19 points, getting 16 of them in the second half.

Bucky Morris also finished in twindigits, contributing 10 to the Irish attack.

Neither team was overly impressive in the shooting department as each wound up close to the 38 per cent mark. The Tomcats had difficulty finding the range in the first quarter when the Irish were extremely cold in the second quarter.

Tom Borgeding sent Holy Family into the opening lead with a free throw but Lynch popped one in from the corner and the Tomcats moved to a five-point bulge. Morris then hit two 25-footers and Maynard Thomas, a short jumper to put the Irish back in front.

After Ellis Childers gave Ashland another momentary lead, Layne hit two consecutive buckets and the Irish were on top 18-10. Conley's lay-up finished the quarter scoring with Holy Family leading 13-12.

The advantage changed hands three times in the opening minute of the second quarter with Lynch's duo of gratis heaves leaving Ashland on top 16-15. The Tomcats were never headed from that point.

After Owens and Morris traded goals, Holy Family had difficulty hitting the bucket and Ashland took advantage of this cold spell to score 15 of the next 16 points and a 33-18 lead.

But the never-say-die Irish kept battling gamely and cut the difference to 10 three times before Lynch hit a 10-footer and Childers a brace of frees to make it 41-27 at halftime. Borgeding, Thomas and Layne led the closing surge by the Irish.

Both squads looked a little ragged in the opening segment of the third frame but Davis and Morris combined to trim Ashland's lead to 48-38 with 3:07 left in the quarter. John Sieweke, who followed close behind Owens in the rebounding department, paced the effort for the Tomcats and they led by 19 before John Brislin's bucket at the buzzer left the count at 59-42. Ashland scored 11 of the last 15 points in the third quarter.

Coach Carroll, who has done an excellent job in his initial season at the helm of the Irish, began inserting his reserves early in the fourth frame and Coach Cole did likewise in the closing minutes. The Tomcats outscored their crosstown rivals 28-15 in the final segment.

Ashland (84) — R. Griffith, Owens 11, Sieweke 8, Childers 11, Lynch 27, Conley 17, Workman 4, Johnson 3, Salyer 3, M. Griffith, Gartrell, Franklin. PF: 16. FT: 24-36.

Holy Family (57) — Layne 8, Thomas 5, Morris 10, Borgeding 5, Davis 19, Slattery 4, Buyalos 2, B. Stump, Uhlen, E. Stump, Johnson, Brislin 4. PF: 22. FT: 11-20.

ASHLAND 12:29:18:25
HOLY FAMILY 13:18:16:15

SPORTS

WEDNESDAY EVENING, MARCH 16, 1967 PAGE SEVENTEEN

Ashland, Bath Co. Win

16th Regional Openers

AHS Tops Bulldogs 101-67

By MALCOLM CONLEY
Independent Sports Editor

"It was a balanced team effort . . . just what we've got to have if we are to win." So said Ashland Coach Harold Cole after his Tomcat squad had outscored McKell in every period for a 101-76 victory in the 16th Regional Tournament at Paul Blazer High School last night.

The win vaults the Ashland quintet into Thursday's 7:30 p. m. upper-bracket semifinal contest against Bath County, which turned back Grayson 71-58 in the tournament opener.

Another exciting evening of basketball is indicated today when first-round action gets underway in the lower-bracket.

Russell's highly-rated Red Devils will take on Rowan County at 7 tonight while Holy Family clashes with Olive Hill in what could well be one of the top tilts of the 16th Regional.

"Our kids displayed an unselfish attitude and constant team hustle. They were mentally alert and hit the boards well," the Tomcat mentor said of his charges hastening to add, "We also shot fairly well."

Controlling the boards, and moving the ball well to find the open man, Ashland finished with a 52 per cent shooting mark compared to McKell's 36 per cent.

The Tomcats placed five players in double-figure figures. Bobby Lynch ripped the cords for 22 dimes while Joe Conley, zipping precisionally time passes with regularity followed eighth behind with 20.

The game was also dominated by the Tomcats as they had a 56-37 edge in hauling in rebounds. Danny Owens and John Sieweke led this department for the Ashlanders, Owens grabbing 16 and Sieweke 15. Ellis Childers finished with eight, getting most of them in a fine first quarter effort.

Neither ball club shot extremely well. Ashland connected on 28 of 78 shots for a 35 per cent mark with Bath County netting 15 of 56 attempts and a 27 per cent mean.

Guler's free throw shot Bath County into the initial lead but Sieweke, turning in his second consecutive sterling tournament effort, hooked one through for a 21 Tomcat margin.

Guler retaliated with a jumper from the foul line and again the Wildcats were in front. A three-point play by Lynch propelled the Ashlanders ahead 5-3 with 5:21 remaining in the first quarter and the Tomcats were in or behind from that point.

Ashland tallied the next seven points for a 12-3 bulge and was ahead 18-10 when the quarter drew to a close. The fact that Bath County had trouble hitting, rebounding of Childers and sharp passing of Conley played important roles in the opening frame.

Childers gave Ashland a 10-point lead at the start of the seven-played second quarter and the Tomcats had the same margin until the closing minute.

Guler sank a brace of gratis heaves and Hogge hit on a fast break to shave the advantage to 18-10 before Keith Johnson buckets

at the foul line for a 38-20 score at halftime.

Ashland upped its advantage to 19 in the second period but Kouns and John Qualls quickly cut it to 13. Keith Johnson and Harr matched free throws and the count read 49-35 at halftime.

The Tomcats' defense tightened noticeably in the early stages of the third quarter. At the same time McKell's shooting dropped off and Ashland jumped to a 25-point margin. Qualls 25-footer just before the horn cut it to 75-52.

Outscoring the Bulldogs 26-15 in the final segment, Mike Griffith's rebound gave Ashland its 101 total with 1:13 left to play. J. B. Liles, Chuck Cleary and David Warner scored the final six points for McKell.

The Bulldogs' season ended at 12:11.

Ashland (101) — Owens 4, Werkman 18, Childers 11, Johnson 3, Sieweke 19, Lynch 22, Conley 29, M. Griffith 2, Sawyer, Gartrell, Franklin, Huff, PF: 17, FT: 15-21.

McKell (67) — Harr 14, Qualls 7, Merton 2, Warner 1, Lyons 2, Kouns 17, Austin 19, Liles 7, Cleary 4, Reeder, Sammons, PF: 18, FT: 17-27.

ASHLAND — 24:24 27:26 — 101
MCKELL — 18:17 17:15 — 67

SPORTS

FRIDAY EVENING, MARCH 10, 1967

PAGE NINE

Ashland Gains 16th Regional Title Game

'Cats Win 79 To 51 Over Bath

By MALCOLM CONLEY
Independent Sports Editor

Ashland's Tomcats stand one step away from a return trip to the State Tournament, but . . . Making that step will not be an easy one. Coach Harold Cole's 'cye will be faced with the major task of gaining a win over either Russell or Olive Hill if they hope to repeat as the 16th Regional champion.

Ashland moved into Saturday night's 8 o'clock championship fray by turning back a battling Bath County "quinte" 79-51 last night in the Paul Blazer High School gym.

Russell, the state's 13th ranked team, clashes with the strongest finishing Olive Hill squad at 7:30 p.m. today in the lower-bracket semifinals with the victor moving into the title game against the Tomcats.

Once again it was balanced scoring that carried the Tomcats to their 14th straight win for a 23-4 record.

Bobby Lynch led the effort with a 19 point performance while John Sieweke was picking up 15. Joe Conley 13, Wayne Workman 11 and Danny Owens 10.

Coach Jack Smoot's young Bath County team managed to place only two players in double figures. Mike Guiler, 6-4 junior pivotman, labored diligently on the boards and came through with 17 tallies. Tommy Hoze, 6-0 junior, added 10 points on the boards.

John Sieweke turned in an outstanding performance on the boards while also finding the range for 19 points. Wayne Workman, the dependable reserve, again came off the bench in blazing fashion and posted 18 tallies. Ellis Childers, teaming with Sieweke for clutch rebounding, wound up with 11 points.

The game, never-say-die, McKell squad had three cagers in twin-digit category. Setting the pace for Coach Bob Crotty's aggregation was Bob Austin, 6-0 senior, with 19.

Bill Kouns also contributed 17 to the Bulldogs' cause with Bill Harr, a 6-1 junior coming through with 14 points.

"Our boys were scared to death. They made mistakes early so we had to try and play catch-up ball all the way," Coach Crotty said of the Bulldogs, who never quit trying or hustling until the final horn.

Buckets by Conley and Sieweke propelled Ashland into a 4-0 lead but Austin scored five straight tallies for McKell and the Green-up County five led 3-4. A 20-footer by Danny Owens returned the Tomcats into command and although Kouns knotted the count with a charity throw, Ashland was never headed from that point.

With Sieweke and Childers dominating the boards, the Tomcats pulled to a 24-18 bulge at the end of the quarter although the fast-moving McKell squad never permitted the Ashlanders to gain full control. Sieweke finished the evening with 16 rebounds to his credit while Childers was getting 12 and Lynch 11.

Bath County's Bill Johnson narrowed the gap to five points when the third quarter opened but then Ashland moved into command. The Tomcats steadily pulled away, outpointing the Wildcats 21-11 in the stanza for a 57-37 lead at the horn.

After Bath County's Johnson and Ashland's Conley were ejected following a brief flare-up of tempers with a minute having gone by in the fourth period the Tomcats unreeled 10 straight points to put the game out of reach. Ashland outscored the Wildcats 22-12 in the final eight minutes.

Bath County concluded its season with a 16-12 slate.

Ashland (79)—Owens 10, Workman 11, Childers 6, Sieweke 15, Lynch 19, Conley 13, Johnson 4, M. Griffith 1, Salyer, R. Griffith, Gartrell, Kleykamp. PF: 22. FT: 23-35.

Bath County (51)—Clomons 4, Hogge 10, Harris 7, Guiler 17, Johnson 8, Caudill 7, Stull 2, Copher, Brewer, Goodpaster. PF: 22. FT: 21-34.

ASHLAND (79) 18-15 24-22-79
BATH CO. 10-16 11-14-51

Russell In 'Sweet Sixteen'

First Time

Radcliffe, Roberts Pace Win

By MIKE RELIFORD
Assistant Sports Editor

The Russell Red Devils and Marvin Meredith, after four years as the 16th region's bridesmaid, dethroned the Ashland Tomcats, 79-72, last night in the Paul Blazer arena for the right to represent the region in the State Tournament in Louisville this week.

Russell had been to the tournament twice before Meredith took the helm.

"It was beginning to feel like we might never make it," Coach Meredith said. "It is like a dream comes true. The boys really earned it."

Russell, six times in the regional tournament and four times in the championship game under Meredith, won behind the shooting of Tom Roberts and Steve Radcliff. Roberts, a 6-6 junior, and Radcliff, a 6-2 senior, each clipped in 27 points while controlling the backboards for the Red Devils.

Moony again prevailed as the win on the Tomcat floor proved to be a retaliation for Ashland's 76-66 victory at Russell during the regular season, but it was the most inopportune time ever for Coach Harold Cole and the Ashland players and fans.

As always, when a dream comes true for one, another has to suffer. Ashland, ranked seventh in the final AP poll and bouncing up and down the ratings all season, closed out a tremendous season with the most disappointing being told by the coaches and the players.

Entering the season with a team that was supposedly going to have to battle for a winning record without height and experience, a rarity for Ashland in the past few years, Coach Cole must be complimented for the terrific effort and time spent in molding a fine Ashland Tomcat team.

But the winner was Russell. A very deserving winner!

Coach Meredith and the players, entering the State Tournament with a 23-5 record, worked hard and earned the right to advance. The glory must be placed where it belongs and that is to the Greenup County players and their coaches.

There was Tom Roberts who besides his 27 points, crashed the boards for 13 big rebounds, blocked shots and hit three crucial rebound shots in the final quarter.

There was Steve Radcliff who besides his 27 points, lugged in eight rebounds, hit Roberts with three basket-producing passes in the fourth quarter and sank a 20-footer with 3:33 left to give Russell a lead which it never relinquished.

There was Roger Vanover who pitched in 14 points and grabbed seven rebounds. Vanover broke loose in the final period for eight of his total score.

And there was Mike Fannin and Tookie Helton. Fannin ran the show with the skill of a veteran and finished with nine points. Helton only scored two but was credited with five assists.

Ashland was led by junior guard Bobby Lynch with 21 points. Lynch consistently led Ashland back after time and again the Tomcats were almost counted out.

John Sieweke followed Lynch with 14 points while Danny Owens and Joe Conley netted 13 and 12, respectively. Ellis Childers and Wayne Workman finished with six points each while Childers displayed another fine defensive game.

Owens and Childers led Ashland's rebounding with eight each. Ashland outrebounded Russell for the game, 35-29. Russell connected on 29 of 74 shots from the field while the Tomcats pitched in 28 of 71, both averaging 39 per cent.

Ashland jumped to a quick 6-0 lead as Lynch hit a pair of foul shots and a bucket in the first minute of action and Sieweke laid in a 10-footer with 5:34 showing on the clock. Roberts netted the next four points and the stage was set for one of the most exciting regional championship games in several years.

A 15-footer by Lynch with five seconds left sent Ashland ahead 17-16 entering the second quarter.

Russell roared back in the second quarter to outscore Ashland 19-12 to take a 35-29 lead to the dressing room at halftime. Ashland outscored Russell 9-3 in the first 2:07 of the second half to tie the contest at 38-38. The teams traded baskets until Radcliff hit a basket and free throw

for a 45-42 Russell lead. The Tomcats couldn't catch up and the third period ended with the Red Devils on top 55-54.

After Vanover hit the opening shot of the fourth quarter, Sieweke hit a 15-footer and then took a pass from Lynch for a "gimme" to put the Tomcats on top 59-57 with 6:35 remaining. Roberts hit another "soft" left-hand jumper to put the Red Devils back on top, 59-58.

Ashland lost the ball on its trip down the floor, but Childers made a steal under the Russell basket and hit Workman with a pass to put the Tomcats back on top.

Fannin, Vanover and Roberts put buckets in consecutively but Lynch and Conley matched them. Radcliff then hit his shot and Russell was on its way to the State Tournament.

The game was marred by a scuffle between an Ashland fan and a referee immediately following the game.

Russell made a clean sweep of things last night as the Red Devil cheerleaders won the cheerleading trophy.

Players selected on the All-Regional Team were:

Bob Austin, McKell; Charles Baker, Grayson Prichard; Joe Conley, Ashland; Curt Cudgill, Rowan County; Ellis Childers, Ashland; Tom Davis, Ashland; Holy Family; Mike Guiler, Bath County; Brent Henderson, Olive Hill; Bob Lynch, Ashland; Steve Radcliff, Russell; Tom Roberts, Russell; John Sieweke, Ashland; Workman 6, Childers 6, Sieweke 14, Lynch 21, Conley 12, Johnson, PF: 28, FT: 16-18.

Russell (79) — Radcliff 27, Vanover 14, Roberts 27, Fannin 9, Helton 2, PF 32, FT 21-27.
ASHLAND — 17-12 25-16-72
RUSSELL — 16-19 29-24-72